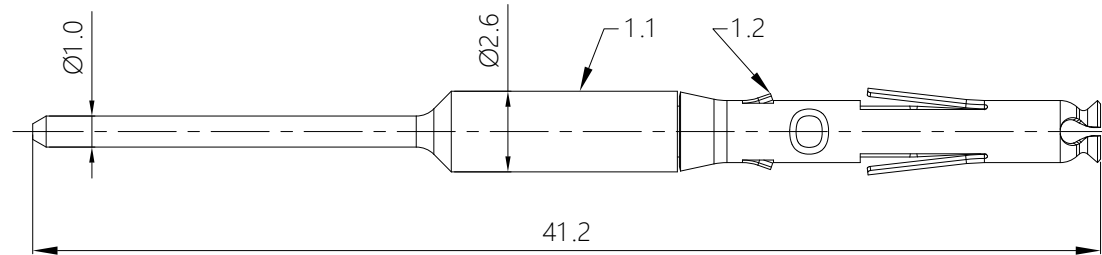


REVISIONS					
REV	ECO	DESCRIPTION	DATE	BY	APPR
A1	-	RELEASED DRAWING	May-12-2020	Flan	Tommy



NOTES: (UNLESS OTHERWISE SPECIFIED)

1. MATERIAL:
 - 1.1. CONTACT BODY: COPPER ALLOY.
 - 1.2. POSITIONING CLIP: STAINLESS STEEL.
2. SPECIFICATIONS:
 - 2.1 CURRENT RATING : 7.5A(MAX).
 - 2.2 TERMINATION TYPE: SOLDERING.
3. ALL DIMENSION ARE FOR REFERENCE USE ONLY.
4. ROHS COMPLIANT.

P/N	CONTACT PLATING(MATING AREA)
MS20W12E09F	GOLD FLASH PLATING OVER NICKEL.
MS20W12E09G5	5μ"GOLD PLATING OVER NICKEL.
MS20W12E09G10	10μ"GOLD PLATING OVER NICKEL.
MS20W12E09G15	15μ"GOLD PLATING OVER NICKEL.
MS20W12E09G30	30μ"GOLD PLATING OVER NICKEL.

QUANTITY	PART NUMBER	DESCRIPTION	ITEM										
MATERIALS LIST													
<small>UNLESS OTHERWISE SPECIFIED: 1) All dimensions are in metric(mm). 2) Tolerances are as follows: 1 PL DEC ±0.30 2 PL DEC ±0.15 3 PL DEC ±0.08 Fractions ±1/64 Angles ±1°</small>		<table border="1"> <thead> <tr> <th>SIGNATURES</th> <th>DATE</th> </tr> </thead> <tbody> <tr> <td>DRAWN: Flan</td> <td>May-11-2020</td> </tr> <tr> <td>CHECKED: Orion</td> <td>May-12-2020</td> </tr> <tr> <td>ENGINEER:</td> <td></td> </tr> <tr> <td>APPROVAL: Tommy</td> <td>May-12-2020</td> </tr> </tbody> </table>		SIGNATURES	DATE	DRAWN: Flan	May-11-2020	CHECKED: Orion	May-12-2020	ENGINEER:		APPROVAL: Tommy	May-12-2020
SIGNATURES	DATE												
DRAWN: Flan	May-11-2020												
CHECKED: Orion	May-12-2020												
ENGINEER:													
APPROVAL: Tommy	May-12-2020												
<small>MATERIAL SPECIFICATIONS:</small>		Amphenol Sine Systems - www.amphenol-sine.com 44724 Morley Drive Clinton Township, MI 48036											
<small>PROCESS SPECIFICATIONS:</small>		ECO-MATE, MACHINE, SIZE 20, SOCKET PCB CONTACT											
<small>NEXT ASSY:</small>		<small>SIZE</small> B <small>TYPE</small> C- <small>DWG NO.</small> MS20W12E09xx <small>REVISION</small> A1	<small>SCALE</small> NONE <small>SHEET</small> 1 <small>OF</small> 1										

TITLE: ECO-MATE,MACHINE,SIZE 20,SOCKET PCB CONTACT
 DWG NO: MS20W12E09xx
 REV: A1
 SH: 1
 OF: 1