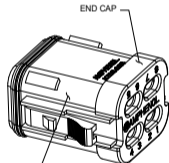
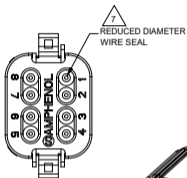
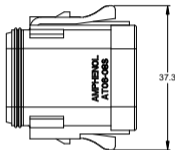
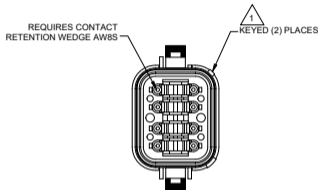
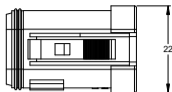


REVISIONS					
REV	ECO	DESCRIPTION	DATE	BY	APPR
A3	-	RELEASE NEW DWG FORMAT	03JAN14	JARRY	
A4	-	REVISED IP RATINGS TO IP68/IP69	17DEC2025	JHEAD	DH



NOTES: UNLESS OTHERWISE SPECIFIED

1 SEE SHEET 2 FOR KEY ARRANGEMENTS AND COLORS.

2. MATERIAL:
HOUSING: THERMOPLASTIC
SEAL: SILICONE RUBBER

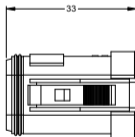
3. MODIFICATIONS: END CAP:
REDUCED DIAMETER WIRE SEAL

4. SPECIFICATIONS:

- 4.1 CURRENT RATING: 13 AMPS
- 4.2 OPERATING TEMPERATURE: -55°C TO +125°C
- 4.3 DIELECTRIC WITHSTANDING VOLTAGE: LESS THAN 2 MILLIAMPS CURRENT LEAKAGE @ 1500 VOLTS AC.
- 4.4 INSULATION RESISTANCE: 1000 MEGOHMS MIN @ 25°C.
- 4.5 MOISTURE RESISTANCE: IP68 (1M OF WATER FOR A PERIOD OF 24 HOURS, MATED CONDITION) IP69K (MATED CONDITION)
- 4.6 MATING CYCLE DURABILITY: 100 CYCLES
- 4.7 RoHS COMPLIANT

5. MATING PART: AT04-08PX* RECEPTACLE
(X = A,B,C,D KEYS; * = MODIFICATIONS AND COLORS)

6. ALL DIMENSIONS ARE FOR REFERENCE USE ONLY.



7 CONTACT SIZE AND REAR SEAL WIRE RANGE:

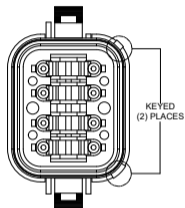
CONTACT SIZE	MIN. INSUL O.D.	MAX. INSUL O.D.	TYPICAL WIRE RANGE
16	1.35 mm (.053 in)	3.05 mm (.120 in)	14 - 20 AWG

1 REFER TO SHEET 2 FOR AVAILABLE CONNECTOR COLORS

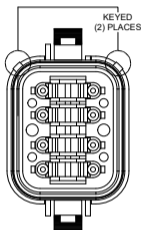
SEE PART NUMBER CHART		PART NUMBER		DESCRIPTION		ITEM
QUANTITY	MATERIALS LIST					
UNLESS OTHERWISE SPECIFIED:		DESIGN	SIGNATURE	DATE	 Sims Systems - www.amphenol-sims.com 44724 Morley Drive Clinton Township, MI 48036	
1) All dimensions are in millimeters		JERRY		03JAN14		
2) Tolerances are as follows: 2 PL DEC +0.15 Fractions & 1/16" 24 HOURS Angles ± 1/16"		DESIGNER				
3) Note reference = 1		APPROVAL			PLUG, 8 SOCKET, AT SERIES, END CAP, KEYED, REDUCED DIAMETER WIRE SEAL	
MATERIAL SPECIFICATIONS		CUSTOMER		PROCESS SPECIFICATIONS: INFORMATION IS SUPPLIED FOR INFORMATION ONLY. DESIGN FEATURES, SPECIFICATIONS AND PERFORMANCE DATA SHOWN HEREON ARE THE PROPERTY OF THE APPLICABLE CORPORATION AND RIGHTS OF REPRODUCTION ARE RESERVED. ALL DIMENSIONS ARE SUBJECT TO NORMAL MANUFACTURING VARIATIONS.		
NEXT ASSY:		SCALE	NONE	SHEET	1	OF 2

REVISIONS				
REV	ECO	DESCRIPTION	DATE	BY APPR

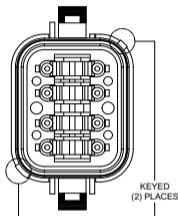
P/N AT06-08SA-MM01
KEY-A CONFIGURATION
STANDARD COLOR: GREY



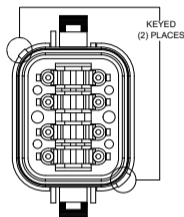
P/N AT06-08SB-MM01
KEY-B CONFIGURATION
STANDARD COLOR: BLACK



P/N AT06-08SC-MM01
KEY-C CONFIGURATION
STANDARD COLOR: GREEN



P/N AT06-08SD-MM01
KEY-D CONFIGURATION
STANDARD COLOR: BROWN



KEY-A CONFIGURATION	
COLOR	PART NUMBER
* GREY	AT06-08SA-MM01
BLACK	AT06-08SA-MMBLK
GREEN	AT06-08SA-MMGRN
BROWN	AT06-08SA-MMBRN

KEY-B CONFIGURATION	
COLOR	PART NUMBER
GREY	AT06-08SB-MMGRY
* BLACK	AT06-08SB-MM01
GREEN	AT06-08SB-MMGRN
BROWN	AT06-08SB-MMBRN

KEY-C CONFIGURATION	
COLOR	PART NUMBER
GREY	AT06-08SC-MMGRY
BLACK	AT06-08SC-MMBLK
* GREEN	AT06-08SC-MM01
BROWN	AT06-08SC-MMBRN

KEY-D CONFIGURATION	
COLOR	PART NUMBER
GREY	AT06-08SD-MMGRY
BLACK	AT06-08SD-MMBLK
GREEN	AT06-08SD-MMGRN
* BROWN	AT06-08SD-MM01

NOTE:

AN ASTERISKS (*) PLACED BEFORE THE COLOR DENOTES THE STANDARD MOLDED COLOR OF THE CONNECTORS SHOWN ABOVE.

OTHER COLORS SHOWN ARE AVAILABLE VIA SPECIAL ORDER.

SEE PART NUMBER		DESCRIPTION		ITEM
CHART		PART NUMBER		
QUANTITY		MATERIALS LIST		
<small>UNLESS OTHERWISE SPECIFIED:</small> 1) All dimensions are in millimeters. 2) Tolerances are as follows: 1 P/L DEC: 45.30 ± .010 (maximum) ± .015 (typical) 2 P/L DEC: 45.75 ± .010 3 P/L DEC: 45.50 ± .010 3) Note reference to Augment 47.		<small>REVISIONS:</small> DESIGN: JARRY CHECKED: ENGINEER: APPROVAL: CUSTOBER: PROCESS SPECIFICATIONS: TEST APP:		DATE: 03JUN14 44724 Morley Drive Clinton Township, MI 48036
<small>THIS DRAWING IS SUPPLIED FOR INFORMATION ONLY. DESIGN FEATURES, SPECIFICATIONS AND PERFORMANCE DATA INDICATED HEREON ARE THE PROPERTY OF THE AMPHENOL CORPORATION. NO RIGHTS OF REPRODUCTION ARE GRANTED. ALL DIMENSIONS ARE SUBJECT TO NORMAL MANUFACTURING VARIATIONS.</small>		<h1>Amphenol</h1>		
PLUG, 8 SOCKET, AT SER, END CAP, KEYED, REDUCED DIAMETER WIRE SEAL		B C- AT06-08SX-MMXXX		A4
SCALE: NONE		SHEET 2 OF 2		

TITLE: PLUG, 8 SOCKET, AT SER, END CAP, KEYED, REDUCED DIAMETER WIRE SEAL
DRAWING: AT06-08SX-MMXXX
REV: A4
SH: 2
OF: 2