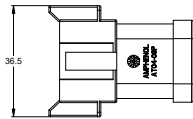
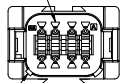


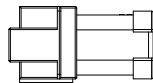
REVISIONS					
REV	ECO	DESCRIPTION	DATE	BY	APPR
A4	-	RELEASE NEW DRAWING FORMAT	02/07/14	DRP	-
A5	-	REVISED IP RATINGS TO IP68/IP69	12JUN2025	JHEAD	DH
A6	-	ADDED DATE CODE FEATURE	17DEC2025	JHEAD	DH



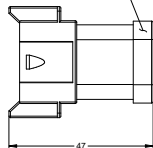
REQUIRES CONTACT RETENTION WEDGE AW8P



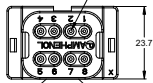
1 KEYWAY (2) PLACES



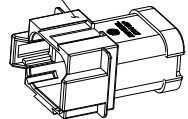
END CAP



7 REDUCED DIAMETER WIRE SEAL



1 REFER TO SHEET 2 FOR AVAILABLE CONNECTOR COLORS



NOTES: UNLESS OTHERWISE SPECIFIED

1 SEE SHEET 2 FOR KEY ARRANGEMENTS AND COLORS.

2. MATERIAL:  
HOUSING: THERMOPLASTIC  
SEAL: SILICONE RUBBER

3. MODIFICATIONS: REDUCED DIAMETER WIRE SEAL; END CAP

4. SPECIFICATIONS:  
4.1 CURRENT RATING: 13 AMPS  
4.2 OPERATING TEMPERATURE: -55°C TO +125°C  
4.3 DIELECTRIC WITHSTANDING VOLTAGE: LESS THAN 2 MILLIAMPS CURRENT LEAKAGE @ 1500 VOLTS AC.  
4.4 INSULATION RESISTANCE: 1000 MEGOHMS MIN @ 25°C.  
4.5 MOISTURE RESISTANCE: IP68 ( 1M OF WATER FOR A PERIOD OF 24 HOURS, MATED CONDITION ); IP69K( MATED CONDITION )  
4.6 MATING CYCLE DURABILITY: 100 CYCLES  
4.7 ROHS COMPLIANT

5. MATING PART: AT06-08SX\* PLUG  
( X = A,B,C,D KEYS; \* = MODIFICATIONS AND COLORS )

6. ALL DIMENSIONS ARE FOR REFERENCE USE ONLY.

7 CONTACT SIZE AND REAR SEAL WIRE RANGE:

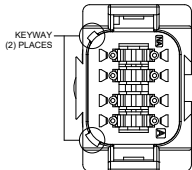
CONTACT SIZE	MIN. INSUL. O.D.	MAX. INSUL. O.D.	TYPICAL WIRE RANGE
16	1.35 mm (.053 in)	3.05 mm (.120 in)	14 - 20 AWG

SEE SHEET 2		DESCRIPTION		ITEM
QUANTITY	PART NUMBER	MATERIALS LIST		
UNLESS OTHERWISE SPECIFIED		MATERIAL SPECIFICATIONS		<p><b>Amphenol</b></p> <p>Sine Systems - www.sineco.com 44724 Morley Drive Clinton Township, MI 48038</p> <p>RECEPTACLE, 8 PIN, AT SERIES, KEYED, END CAP, REDUCED DIAMETER SEAL</p>
1) All dimensions are in millimeters		THIS DRAWING IS SUPPLIED FOR INFORMATION ONLY. OTHER RELEVANT SPECIFICATIONS AND PERFORMANCE DATA SHOULD BE REFERRED TO THE PROPERTY OF THE AMPHENOL CORPORATION. NO RIGHTS OF REPRODUCTION ARE GRANTED. ALL DIMENSIONS ARE SUBJECT TO NORMAL MANUFACTURING VARIATIONS.		
2) Tolerances are as follows: 1 PL DEC AC 30 2 PL DEC AC 30 3 PL DEC AC 30		PROCESS SPECIFICATIONS		
3) Note reference = 1 1) Partitions, a 104 Angles ±1°		TEST SPEC.		
MATERIAL SPECIFICATIONS		MATERIAL SPECIFICATIONS		<p>REVISION</p> <p><b>B C-</b> AT04-08PX-MMXXX <b>A6</b></p>
PROCESS SPECIFICATIONS		MATERIAL SPECIFICATIONS		<p>DATE</p> <p>02/07/14</p> <p>BY</p> <p>DRP</p> <p>APPROVAL</p>
TEST SPEC.		MATERIAL SPECIFICATIONS		<p>DATE</p> <p>17DEC2025</p> <p>BY</p> <p>JHEAD</p> <p>APPROVAL</p>
MATERIAL SPECIFICATIONS		MATERIAL SPECIFICATIONS		<p>DATE</p> <p>02/07/14</p> <p>BY</p> <p>DRP</p> <p>APPROVAL</p>
MATERIAL SPECIFICATIONS		MATERIAL SPECIFICATIONS		<p>DATE</p> <p>12JUN2025</p> <p>BY</p> <p>JHEAD</p> <p>APPROVAL</p>
MATERIAL SPECIFICATIONS		MATERIAL SPECIFICATIONS		<p>DATE</p> <p>17DEC2025</p> <p>BY</p> <p>JHEAD</p> <p>APPROVAL</p>

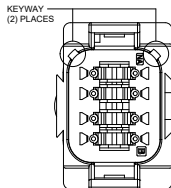
11/14/2014 REV. 01 AT04-08PX-MMXXX  
 11/14/2014 REV. 02 AT04-08PX-MMXXX  
 11/14/2014 REV. 03 AT04-08PX-MMXXX  
 11/14/2014 REV. 04 AT04-08PX-MMXXX  
 11/14/2014 REV. 05 AT04-08PX-MMXXX  
 11/14/2014 REV. 06 AT04-08PX-MMXXX  
 11/14/2014 REV. 07 AT04-08PX-MMXXX  
 11/14/2014 REV. 08 AT04-08PX-MMXXX  
 11/14/2014 REV. 09 AT04-08PX-MMXXX  
 11/14/2014 REV. 10 AT04-08PX-MMXXX  
 11/14/2014 REV. 11 AT04-08PX-MMXXX  
 11/14/2014 REV. 12 AT04-08PX-MMXXX  
 11/14/2014 REV. 13 AT04-08PX-MMXXX  
 11/14/2014 REV. 14 AT04-08PX-MMXXX  
 11/14/2014 REV. 15 AT04-08PX-MMXXX  
 11/14/2014 REV. 16 AT04-08PX-MMXXX  
 11/14/2014 REV. 17 AT04-08PX-MMXXX  
 11/14/2014 REV. 18 AT04-08PX-MMXXX  
 11/14/2014 REV. 19 AT04-08PX-MMXXX  
 11/14/2014 REV. 20 AT04-08PX-MMXXX  
 11/14/2014 REV. 21 AT04-08PX-MMXXX  
 11/14/2014 REV. 22 AT04-08PX-MMXXX  
 11/14/2014 REV. 23 AT04-08PX-MMXXX  
 11/14/2014 REV. 24 AT04-08PX-MMXXX  
 11/14/2014 REV. 25 AT04-08PX-MMXXX  
 11/14/2014 REV. 26 AT04-08PX-MMXXX  
 11/14/2014 REV. 27 AT04-08PX-MMXXX  
 11/14/2014 REV. 28 AT04-08PX-MMXXX  
 11/14/2014 REV. 29 AT04-08PX-MMXXX  
 11/14/2014 REV. 30 AT04-08PX-MMXXX  
 11/14/2014 REV. 31 AT04-08PX-MMXXX  
 11/14/2014 REV. 32 AT04-08PX-MMXXX  
 11/14/2014 REV. 33 AT04-08PX-MMXXX  
 11/14/2014 REV. 34 AT04-08PX-MMXXX  
 11/14/2014 REV. 35 AT04-08PX-MMXXX  
 11/14/2014 REV. 36 AT04-08PX-MMXXX  
 11/14/2014 REV. 37 AT04-08PX-MMXXX  
 11/14/2014 REV. 38 AT04-08PX-MMXXX  
 11/14/2014 REV. 39 AT04-08PX-MMXXX  
 11/14/2014 REV. 40 AT04-08PX-MMXXX  
 11/14/2014 REV. 41 AT04-08PX-MMXXX  
 11/14/2014 REV. 42 AT04-08PX-MMXXX  
 11/14/2014 REV. 43 AT04-08PX-MMXXX  
 11/14/2014 REV. 44 AT04-08PX-MMXXX  
 11/14/2014 REV. 45 AT04-08PX-MMXXX  
 11/14/2014 REV. 46 AT04-08PX-MMXXX  
 11/14/2014 REV. 47 AT04-08PX-MMXXX  
 11/14/2014 REV. 48 AT04-08PX-MMXXX  
 11/14/2014 REV. 49 AT04-08PX-MMXXX  
 11/14/2014 REV. 50 AT04-08PX-MMXXX  
 11/14/2014 REV. 51 AT04-08PX-MMXXX  
 11/14/2014 REV. 52 AT04-08PX-MMXXX  
 11/14/2014 REV. 53 AT04-08PX-MMXXX  
 11/14/2014 REV. 54 AT04-08PX-MMXXX  
 11/14/2014 REV. 55 AT04-08PX-MMXXX  
 11/14/2014 REV. 56 AT04-08PX-MMXXX  
 11/14/2014 REV. 57 AT04-08PX-MMXXX  
 11/14/2014 REV. 58 AT04-08PX-MMXXX  
 11/14/2014 REV. 59 AT04-08PX-MMXXX  
 11/14/2014 REV. 60 AT04-08PX-MMXXX  
 11/14/2014 REV. 61 AT04-08PX-MMXXX  
 11/14/2014 REV. 62 AT04-08PX-MMXXX  
 11/14/2014 REV. 63 AT04-08PX-MMXXX  
 11/14/2014 REV. 64 AT04-08PX-MMXXX  
 11/14/2014 REV. 65 AT04-08PX-MMXXX  
 11/14/2014 REV. 66 AT04-08PX-MMXXX  
 11/14/2014 REV. 67 AT04-08PX-MMXXX  
 11/14/2014 REV. 68 AT04-08PX-MMXXX  
 11/14/2014 REV. 69 AT04-08PX-MMXXX  
 11/14/2014 REV. 70 AT04-08PX-MMXXX  
 11/14/2014 REV. 71 AT04-08PX-MMXXX  
 11/14/2014 REV. 72 AT04-08PX-MMXXX  
 11/14/2014 REV. 73 AT04-08PX-MMXXX  
 11/14/2014 REV. 74 AT04-08PX-MMXXX  
 11/14/2014 REV. 75 AT04-08PX-MMXXX  
 11/14/2014 REV. 76 AT04-08PX-MMXXX  
 11/14/2014 REV. 77 AT04-08PX-MMXXX  
 11/14/2014 REV. 78 AT04-08PX-MMXXX  
 11/14/2014 REV. 79 AT04-08PX-MMXXX  
 11/14/2014 REV. 80 AT04-08PX-MMXXX  
 11/14/2014 REV. 81 AT04-08PX-MMXXX  
 11/14/2014 REV. 82 AT04-08PX-MMXXX  
 11/14/2014 REV. 83 AT04-08PX-MMXXX  
 11/14/2014 REV. 84 AT04-08PX-MMXXX  
 11/14/2014 REV. 85 AT04-08PX-MMXXX  
 11/14/2014 REV. 86 AT04-08PX-MMXXX  
 11/14/2014 REV. 87 AT04-08PX-MMXXX  
 11/14/2014 REV. 88 AT04-08PX-MMXXX  
 11/14/2014 REV. 89 AT04-08PX-MMXXX  
 11/14/2014 REV. 90 AT04-08PX-MMXXX  
 11/14/2014 REV. 91 AT04-08PX-MMXXX  
 11/14/2014 REV. 92 AT04-08PX-MMXXX  
 11/14/2014 REV. 93 AT04-08PX-MMXXX  
 11/14/2014 REV. 94 AT04-08PX-MMXXX  
 11/14/2014 REV. 95 AT04-08PX-MMXXX  
 11/14/2014 REV. 96 AT04-08PX-MMXXX  
 11/14/2014 REV. 97 AT04-08PX-MMXXX  
 11/14/2014 REV. 98 AT04-08PX-MMXXX  
 11/14/2014 REV. 99 AT04-08PX-MMXXX  
 11/14/2014 REV. 100 AT04-08PX-MMXXX

REVISIONS					
REV	ECO	DESCRIPTION	DATE	BY	APPR
A4	-	RELEASE NEW DRAWING FORMAT	02/07/14	DRP	-
A5	-	REVISED IP RATINGS TO IP68/IP69	12/JUN/2025	JHEAD	DH
A6	-	ADDED DATE CODE FEATURE	17DEC2025	JHEAD	DH

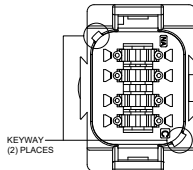
P/N AT04-08PA-MMGRY  
KEY-A CONFIGURATION  
STANDARD COLOR: GREY



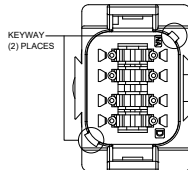
P/N AT04-08PB-MMBLK  
KEY-B CONFIGURATION  
STANDARD COLOR: BLACK



P/N AT04-08PC-MMGRN  
KEY-C CONFIGURATION  
STANDARD COLOR: GREEN



P/N AT04-08PD-MMBRN  
KEY-D CONFIGURATION  
STANDARD COLOR: BROWN



KEY-A CONFIGURATION	
COLOR	PART NUMBER
* GREY	AT04-08PA-MMGRY
BLACK	AT04-08PA-MMBLK
GREEN	AT04-08PA-MMGRN
BROWN	AT04-08PA-MMBRN

KEY-B CONFIGURATION	
COLOR	PART NUMBER
GREY	AT04-08PB-MMGRY
* BLACK	AT04-08PB-MMBLK
GREEN	AT04-08PB-MMGRN
BROWN	AT04-08PB-MMBRN

KEY-C CONFIGURATION	
COLOR	PART NUMBER
GREY	AT04-08PC-MMGRY
BLACK	AT04-08PC-MMBLK
* GREEN	AT04-08PC-MMGRN
BROWN	AT04-08PC-MMBRN

KEY-D CONFIGURATION	
COLOR	PART NUMBER
GREY	AT04-08PD-MMGRY
BLACK	AT04-08PD-MMBLK
GREEN	AT04-08PD-MMGRN
* BROWN	AT04-08PD-MMBRN

**NOTE:**

AN ASTERISKS ( \* ) PLACED BEFORE THE COLOR DENOTES THE STANDARD MOLDED COLOR OF THE CONNECTORS SHOWN ABOVE.

OTHER COLORS SHOWN ARE AVAILABLE VIA SPECIAL ORDER.

PART NUMBER		DESCRIPTION		ITEM
<b>MATERIALS LIST</b>				
QUANTITY	REVISIONS	DATE		
UNLESS OTHERWISE SPECIFIED:	DESIGN: DPAWS	02/07/14		
1) All dimensions are in millimeters (mm).	CHECKED:			
2) Tolerances are as follows:	DESIGNED:			
1 PL. DEC: ±0.30	APPROVAL:			
2 PL. DEC: ±0.15				
3 PL. DEC: ±0.08				
3) Note reference to				
MATERIAL SPECIFICATIONS:	OTHERS:			
PROCESS SPECIFICATIONS:	THIS DRAWING IS SUPPLIED FOR INFORMATION ONLY. DESIGN FEATURES, SPECIFICATIONS AND PERFORMANCE DATA SHOWN HEREIN ARE THE PROPERTY OF THE MANUFACTURER. NO PARTS OR REPRODUCTION ARE PERMITTED. ALL DIMENSIONS ARE SUBJECT TO NORMAL MANUFACTURING VARIATIONS.			
NEXT Assy:	REV: B	TYPE: C-	DWG NO: AT04-08PX-MMXXX	REV: A6
	REASON: NONE			SHEET 2 OF 2

**Amphenol**

Site Systems - www.siteco.com  
44724 Morley Drive  
Clinton Township, MI 48036

RECEPTACLE, 8 PIN, AT SERIES, KEYED, END CAP, REDUCED DIAMETER SEAL

11/18/02/05E IPN AT SERIES END CAP RECEPTACLE SEAL DWG NO: AT04-08PX-MMXXX REV: A6 SH: 2 OF 2