

SMART CARD CONNECTORS®

Series C702

The Amphenol Smart Card series is suitable for various market segments, offers different card handling systems and two contact methods.

Payment

- EMV (Europay Mastercard Visa) compliant
- PCI (Payment Card Industry) compliant

Vending and Metering

- vandalism resistant solutions
- highly reliable

Digital Tachograph

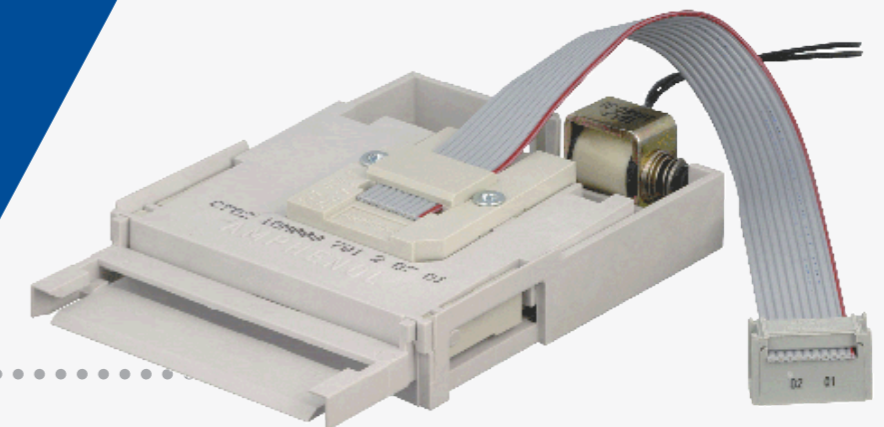
- according to legal regulations

C702 A – Pushmatic® & Vario

Material	Description	Handling system	Contact methods	Mating cycles
C702 10M008 700 2	12V, flat cable termination	PUSHMATIC®	landing contacts	300.000
C702 10M008 701 2	5V, flat cable termination	PUSHMATIC®	landing contacts	300.000
C702 10M008 732 2	5V, flat cable, locking etector	PUSHMATIC®	landing contacts	300.000
C702 10M008 716 2	12V, flat cable, locking etector	PUSHMATIC®	landing contacts	300.000
C702 10M008 015 2	Vario	Push-Push	landing contacts	500.000

...designed for vending and metering, featuring various card handling systems.

Mounting plates, flat cable termination, coin spacer cover, and closure options are also available.



CONTACT DETAILS:

 www.amphenol-industrial.de
 industrial@amphenol.de
 +49 7131 929 0
 August-Haeusser-Str. 10
 74080 Heilbronn
 Germany



INDUSTRIAL@AMPHENOL

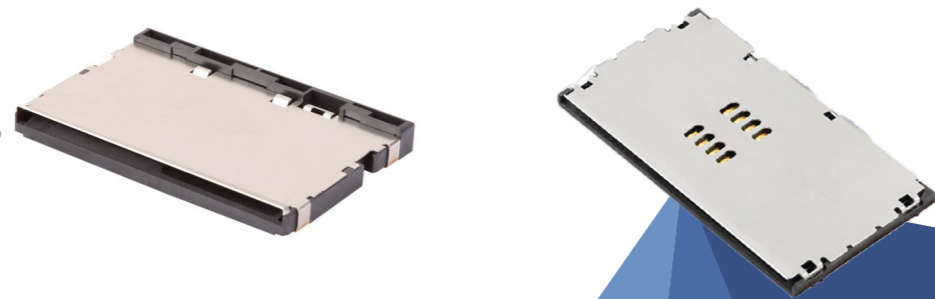


www.amphenol-industrial.de

C702 F – Card | mate®

...renowned for smooth card insertion and compact design, tailored for the payment market. Designed for SMT soldering with a metal cover, it meets EMV and PCI compliance standards. Features include manipulation-proof design with no front contacts and a protected card presence switch. Wiping contacts facilitate easy manual resoldering while maintaining PCI compliance.

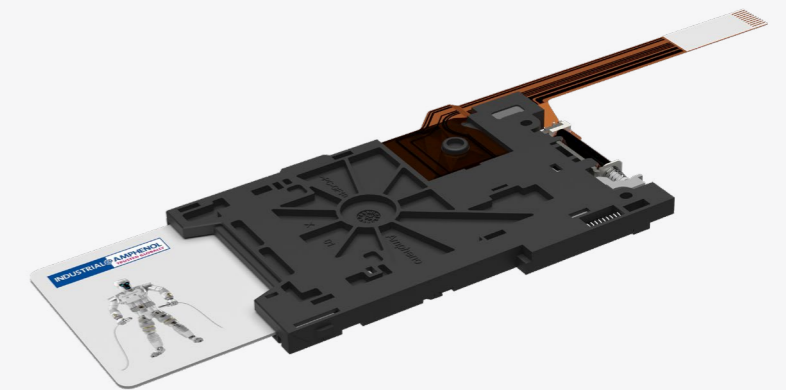
Material	Description	Handling system	Contact methods	Mating cycles
C702 10M008 320 4	normally open switch with position studs	Push-Pull	landing contacts	500.000
C702 10M008 325 4	normally open switch with position studs	Push-Pull	wiping contacts	500.000



C702 C – Automotive Connector®

...tailored for digital tachographs, equipped with card locking and ejection via solenoid. Integrated dust projection ensures durability, meeting automotive standards for shock resistance and compliance with RoHS and WEEE regulations.

Material	Description	Handling system	Contact methods	Mating cycles
C702 10M008 942 2	5V solenoid voltage	PUSHMATIC®	wiping contacts	25.000
C702 10M008 941 4	5V solenoid voltage	PUSHMATIC®	wiping contacts	25.000



C702 G – Slimline®

...compact at 56 mm x 30 mm x 3 mm, featuring a low-profile metal cover for high mechanical stability. Designed for the payment market, this connector is manipulation-proof with a protected card presence switch. Suitable for SMT soldering and compliant with EMC and PCI standards.

Material	Description	Handling system	Contact methods	Mating cycles
C702 10M008 252 40	Normally open switch with positioning studs	Push-Pull	wiping contacts	100.000

