

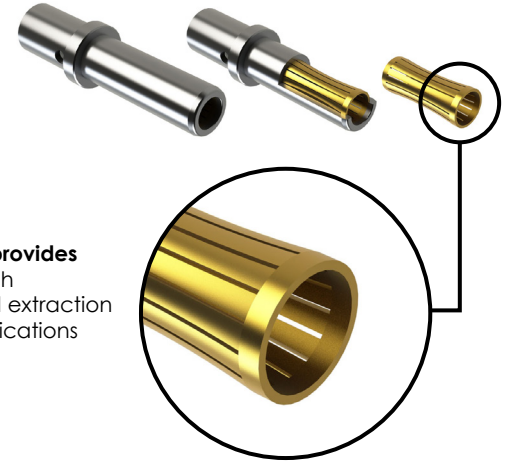


Confidence In Every Connection

The unique design of our **SureSocket™ Contacts**, available in 2.4mm with a wire range of 10-20AWG, provides a **secure 360° of mating surface area** to its mated machined pin. This distributes even forces over a high percentage of the mating surface, creating a smooth, even engagement effort with low insertion and extraction forces as well as low contact resistance. This also contributes to excellent performance in vibration applications with resistance to typical fretting corrosion.

Key Features

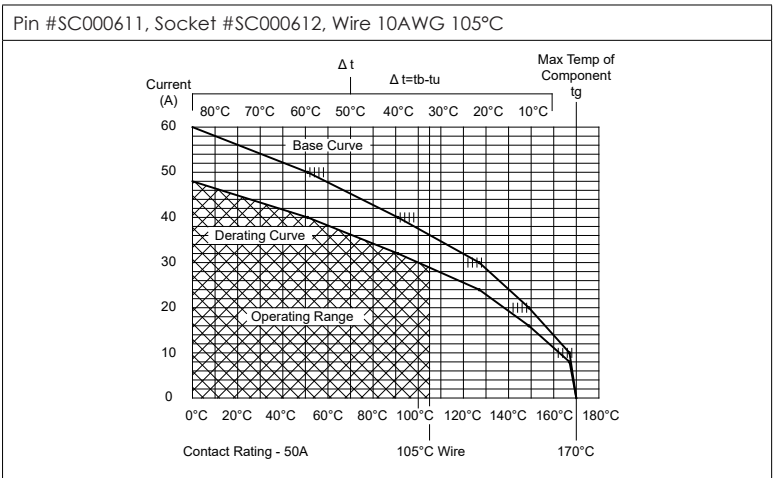
- Longer contact life
- Low contact resistance
- Low insertion & extraction forces
- Increased immunity to shock & vibration
- Contact Area Extends 360° Around Pins
- Higher amperage in a compact design



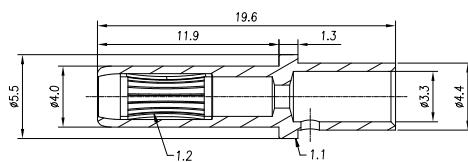
Technical Specifications

Operating Temperature	-40°C to +125°C
Contact Body	Copper Alloy, Silver-Plated
Contact Spring	Copper Alloy, Gold Flash
Max. Current (AMP)	Socket #SC000612 / 35A / 10-12AWG Socket #SC000624 / 25A / 12-14AWG Socket #SC000692 / 16A / 14-16AWG Socket #SC000706 / 12A / 18-20AWG
Termination Type	Crimp
Mating Cycles	<500 matings and unmatings
RoHS	Compliant

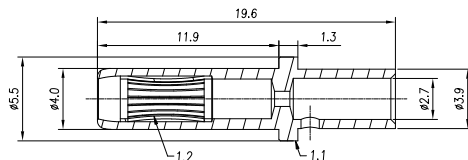
Derating Curves - IEC 60512-5-2 Test 5b



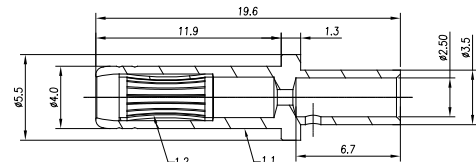
Socket #SC000612 Dimensions



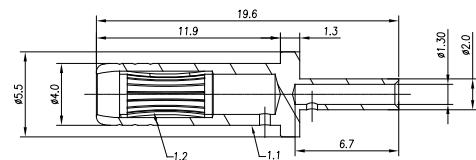
Socket #SC000624 Dimensions



Socket #SC000692 Dimensions



Socket #SC000706 Dimensions



For more information, contact: Customer Service, +1 800 394 7732, csr@amphenol-sine.com