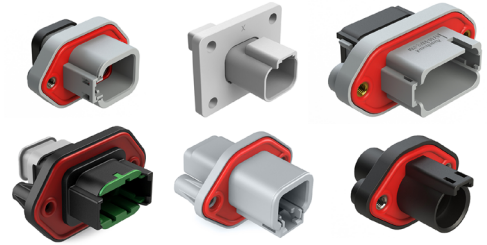




PM Panel|Mate™ Family



Available in a wide variety of A Series™ product lines

Amphenol Sine Systems' **PanelMate™ Family of Printed Circuit Board (PCB) Receptacle Connectors** are engineered with a one-piece, sealed, flanged design for rapid and secure mounting. Their durable, high-temperature, silicone, facial seal provides a barrier of protection from lubricating oils, hydraulic fluids and fossil fuels to withstand the challenges and complexities of harsh environment applications. Also available in a two-piece, sonically-welded, flange design for applications requiring an externally operated connection with 4 pass through holes. All **PanelMate™** product lines accept A Series™ components and are comparable with other industry standard mating connectors.

Available in **AT, ATM, ATP and ATHD Series™**. All **PanelMate™** product lines accept A Series™ components and are comparable with other industry standard mating connectors.

Applications: Heavy Duty, Transportation, Marine, Diagnostic, Military, Alternative Energy, Agricultural and other demanding interconnect architectures

Features

- Flanged; 180° Straight or 90° Right Angle Pin Orientation
- High-temperature silicone seals provide superior sealing
- Comparable with existing standard products industry-wide
- Thermoplastic housing with integrated latch for mating

PanelMate™ Family Specifications Overview (Reference individual datasheets)

Current Rating	7.5A to 100A (See individual datasheets)
Operating Temperature	-55°C to +125°C
Housing/Latch	Thermoplastic/Integrated latch for mating
IP Ratings (in mated condition)	See individual datasheets
Dielectric Value	Meets or exceeds 1500 volts minimum
Drop Test	Shall not become detached or loosened when placed at 750mm and dropped to concrete eight times
Shock	No latch disengagement or discontinuity shall be the result when subjected to 50 g's in each of three axis (X, Y & Z)
Vibration	Continued continuity without degradation to mechanical or physical attributes following vibration. (max acceleration 20 g's at Sine sweep of 10-2000Hz)
Connector Terminal Retention	When subjected to a direct pull, contacts achieve a minimum pull-out force of 25 lbs.
Connector Retention	A mated connector subjected to a pulling force by the exiting wire bundle at 25 lbs. times the number of contacts to a maximum of 100 lbs. applying load for 30 seconds
Thermal Shock	Subjected to 10 cycles at -55°C to +125°C with no cracking/chipping/damage detrimental to the normal operation of the connector
Insulation Resistance	1000 megohms minimum at 25°C
Mating Cycle Durability	Following 100 cycles of connection engagement/disengagement, neither mechanical/electrical degradation is evident

IP Ratings

- IP67 rated (1M of Water for 30 Minutes, in mated condition)
- IP68 rated (1M of Water for 24 Hours, in mated condition)
- IP69K rated (High-Pressure Waterproof, 4 Points (0°, 30°, 60°, 90°), in mated condition)

A Series™ Family



Standard products. Custom solutions
Customer Service +1 800 394 7732

PanelMate™ - Back End Configurations (See individual part datasheets on www.amphenol-sine.com for exact part configuration.)

 -BL04 Flanged, Grey Body, Enhanced Key, Std Dia. Rear Seal	 -BL05 Flanged, Enhanced Key, End Cap, Std Dia. Rear Seal	 -BL08 Flanged, Enhanced Key, Std Dia. Rear Seal	 -CL03 Flanged, Red'd Dia. Rear Seal	 -CL06 Flanged, Red'd Dia. Rear Seal
 -EC End Cap	 -G Gasket	 -GEC Gasket, End Cap	 -L009 Flanged, Inside Mount	 -L012 Flanged
 -L013 Flanged, Outside Mount	 -LE07 Flanged, End Cap	 -LE08 Flanged, Shrink Boot End Cap	 -LE12 Flanged, Shrink Boot End Cap	 -LE14 Flanged
 -LE21 Flanged, Gasket, End Cap, Red'd Dia. Rear Seal	 -PM01 Flanged, Std Dia. Rear Seal	 -PM02 Flanged, Red'd Dia. Rear Seal	 -PM05 Flanged, Gasket, Std Dia. Rear Seal	 -PM06 Flanged, Gasket, Red'd Dia. Rear Seal
 -PM07 Flanged, End Cap, Std Dia. Rear Seal	 -PM08 Flanged, Std Dia. Rear Seal	 -PM11 Flanged, Gasket, Std or Red'd Dia. Rear Seal	 -PM12 Flanged, Gasket, Reduced Dia. Rear Seal	 -PM13 Flanged, End Cap, Gasket, Std or Red'd Dia. Rear Seal
 -PM14 Flanged, End Cap, Gasket, Red'd Dia. Rear Seal	 -PM15 Flanged, Gasket, Strain Relief, Std or Red'd Dia. Rear Seal	 -PM16 Flanged, Gasket, Strain Relief, Red'd Dia. Rear Seal	 -RD Red'd Dia. Rear Seal	 -RDG Gasket, Red'd Dia. Rear Seal
 -PM31 Flanged, Front Mount, Std Dia. Rear Seal				

PanelMate™ AT - Receptacle with Flange (See individual datasheets on www.amphenol-sine.com for full specs, faceviews, keying location and product dimensions.)

Part Number	Description	Contact Size	Amperage	Voltage
AT04-2P-PM11	2 Position, Receptacle with Flange, Pin, PanelMate™ AT, Self-Threading, Gasket, Standard Diameter Rear Seal (Red), Black Body, (Requires Wedgelock AW2P. Keyed Options Available)	16	13A	250V
AT04-2P-PM12	2 Position, Receptacle with Flange, Pin, PanelMate™ AT, Self-Threading, Gasket, Reduced Diameter Rear Seal (Green), Black Body, (Requires Wedgelock AW2P. Keyed Options Available)	16	13A	250V
AT04-2P-PM13	2 Position, Receptacle with Flange, Pin, PanelMate™ AT, Self-Threading, Gasket, Standard Diameter Rear Seal (Red), End Cap, Black Body, (Requires Wedgelock AW2P. Keyed Options Available)	16	13A	250V
AT04-2P-PM14	2 Position, Receptacle with Flange, Pin, PanelMate™ AT, Self-Threading, Gasket, Reduced Diameter Rear Seal (Green), End Cap, Black Body, (Requires Wedgelock AW2P. Keyed Options Available)	16	13A	250V
AT04-2P-PM15	2 Position, Receptacle with Flange, Pin, PanelMate™ AT, Self-Threading, Gasket, Standard Diameter Rear Seal (Red), Strain Relief, Black Body, (Requires Wedgelock AW2P. Keyed Options Available)	16	13A	250V
AT04-2P-PM16	2 Position, Receptacle with Flange, Pin, PanelMate™ AT, Self-Threading, Gasket, Reduced Diameter Rear Seal (Green), Strain Relief, Black Body, (Requires Wedgelock AW2P. Keyed Options Available)	16	13A	250V
AW2P	2 Position, Receptacle Wedgelock, Pin, Green Body	n/a	n/a	n/a

Part Number	Description	Contact Size	Amperage	Voltage
AW2P-A	2 Position, Receptacle Wedgelock, Pin, Keyed A, Grey Body	n/a	n/a	n/a
AW2P-B	2 Position, Receptacle Wedgelock, Pin, Keyed B, Black Body	n/a	n/a	n/a
AW2P-C	2 Position, Receptacle Wedgelock, Pin, Keyed C, Green Body	n/a	n/a	n/a
AW2P-D	2 Position, Receptacle Wedgelock, Pin, Keyed D, Brown Body	n/a	n/a	n/a
AT04-3P-PM05	3 Position, Receptacle with Flange, Pin, PanelMate™ AT, Threaded Insert, Gasket, Standard Diameter Rear Seal (Red), Grey Body, (Requires Wedgelock AW3P)			
AT04-3P-PM11	3 Position, Receptacle with Flange, Pin, PanelMate™ AT, Self-Threading, Gasket, Standard Diameter Rear Seal (Red), Black Body, (Requires Wedgelock AW3P)	16	13A	250V
AT04-3P-PM12	3 Position, Receptacle with Flange, Pin, PanelMate™ AT, Self-Threading, Gasket, Reduced Diameter Rear Seal (Green), Black Body, (Requires Wedgelock AW3P)	16	13A	250V
AT04-3P-PM13	3 Position, Receptacle with Flange, Pin, PanelMate™ AT, Self-Threading, Gasket, Standard Diameter Rear Seal (Red), End Cap, Black Body, (Requires Wedgelock AW3P)	16	13A	250V
AT04-3P-PM14	3 Position, Receptacle with Flange, Pin, PanelMate™ AT, Self-Threading, Gasket, Reduced Diameter Rear Seal (Green), End Cap, Black Body, (Requires Wedgelock AW3P)	16	13A	250V
AT04-3P-PM15	3 Position, Receptacle with Flange, Pin, PanelMate™ AT, Self-Threading, Gasket, Standard Diameter Rear Seal (Red), Strain Relief, Black Body, (Requires Wedgelock AW3P)	16	13A	250V
AT04-3P-PM16	3 Position, Receptacle with Flange, Pin, PanelMate™ AT, Self-Threading, Gasket, Reduced Diameter Rear Seal (Green), Strain Relief, Black Body, (Requires Wedgelock AW3P)	16	13A	250V
AW3P	3 Position, Receptacle Wedgelock, Pin, Green Body	n/a	n/a	n/a
AW3P-J1939	3 Position, Receptacle Wedgelock, Pin, Keyed J-1939, Blue Body	n/a	n/a	n/a
AT04-4P-PM11	4 Position, Receptacle with Flange, Pin, PanelMate™ AT, Self-Threading, Gasket, Standard Diameter Rear Seal (Red), Black Body, (Requires Wedgelock AW4P)	16	13A	250V
AT04-4P-PM12	4 Position, Receptacle with Flange, Pin, PanelMate™ AT, Self-Threading, Gasket, Reduced Diameter Rear Seal (Green), Black Body, (Requires Wedgelock AW4P)	16	13A	250V
AT04-4P-PM13	4 Position, Receptacle with Flange, Pin, PanelMate™ AT, Self-Threading, Gasket, Standard Diameter Rear Seal (Red), End Cap, Black Body, (Requires Wedgelock AW4P)	16	13A	250V
AT04-4P-PM14	4 Position, Receptacle with Flange, Pin, PanelMate™ AT, Self-Threading, Gasket, Reduced Diameter Rear Seal (Green), End Cap, Black Body, (Requires Wedgelock AW4P)	16	13A	250V
AT04-4P-PM15	4 Position, Receptacle with Flange, Pin, PanelMate™ AT, Self-Threading, Gasket, Standard Diameter Rear Seal (Red), Strain Relief, Black Body, (Requires Wedgelock AW4P)	16	13A	250V
AT04-4P-PM16	4 Position, Receptacle with Flange, Pin, PanelMate™ AT, Self-Threading, Gasket, Reduced Diameter Rear Seal (Green), Strain Relief, Black Body, (Requires Wedgelock AW4P)	16	13A	250V
AW4P	4 Position, Receptacle Wedgelock, Pin, Green Body	n/a	n/a	n/a
AT04-6P-PM05	6 Position, Receptacle with Flange, Pin, PanelMate™ AT, Threaded Insert, Gasket, Standard Diameter Rear Seal (Red), Grey Body, (Requires Wedgelock AW6P)	16	13A	250V
AT04-6P-PM11	6 Position, Receptacle with Flange, Pin, PanelMate™ AT, Self-Threading, Gasket, Standard Diameter Rear Seal (Red), Black Body, (Requires Wedgelock AW6P)	16	13A	250V
AT04-6P-PM12	6 Position, Receptacle with Flange, Pin, PanelMate™ AT, Self-Threading, Gasket, Reduced Diameter Rear Seal (Green), Black Body, (Requires Wedgelock AW6P)	16	13A	250V
AT04-6P-PM13	6 Position, Receptacle with Flange, Pin, PanelMate™ AT, Self-Threading, Gasket, Standard Diameter Rear Seal (Red), End Cap, Black Body, (Requires Wedgelock AW6P)	16	13A	250V
AT04-6P-PM14	6 Position, Receptacle with Flange, Pin, PanelMate™ AT, Self-Threading, Gasket, Reduced Diameter Rear Seal (Green), End Cap, Black Body, (Requires Wedgelock AW6P)	16	13A	250V
AT04-6P-PM15	6 Position, Receptacle with Flange, Pin, PanelMate™ AT, Self-Threading, Gasket, Standard Diameter Rear Seal (Red), Strain Relief, Black Body, (Requires Wedgelock AW6P)	16	13A	250V
AT04-6P-PM16	6 Position, Receptacle with Flange, Pin, PanelMate™ AT, Self-Threading, Gasket, Reduced Diameter Rear Seal (Green), Strain Relief, Black Body, (Requires Wedgelock AW6P)	16	13A	250V
AW6P	6 Position, Receptacle Wedgelock, Pin, Green Body	n/a	n/a	n/a

Part Number	Description	Contact Size	Amperage	Voltage
AT04-08PA-PM05	8 Position, Receptacle with Flange, Pin, PanelMate™ AT, Threaded Insert, Gasket, Keyed A, Standard Diameter Rear Seal (Red), Grey Body, (Requires Wedgelock AW8P. Keyed Options Available.)	16	13A	250V
AT04-08PA-PM11	8 Position, Receptacle with Flange, Pin, PanelMate™ AT, Self-Threading, Gasket, Keyed A, Standard Diameter Rear Seal (Red), Grey Body, (Requires Wedgelock AW8P. Keyed Options Available.)	16	13A	250V
AT04-08PB-PM11	8 Position, Receptacle with Flange, Pin, PanelMate™ AT, Self-Threading, Gasket, Keyed B, Standard Diameter Rear Seal (Red), Black Body, (Requires Wedgelock AW8P. Keyed Options Available.)	16	13A	250V
AT04-08PC-PM11	8 Position, Receptacle with Flange, Pin, PanelMate™ AT, Self-Threading, Gasket, Keyed C, Standard Diameter Rear Seal (Red), Green Body, (Requires Wedgelock AW8P. Keyed Options Available.)	16	13A	250V
AT04-08PD-PM11	8 Position, Receptacle with Flange, Pin, PanelMate™ AT, Self-Threading, Gasket, Keyed D, Standard Diameter Rear Seal (Red), Brown Body, (Requires Wedgelock AW8P. Keyed Options Available.)	16	13A	250V
AT04-08PA-PM12	8 Position, Receptacle with Flange, Pin, PanelMate™ AT, Self-Threading, Gasket, Keyed A, Reduced Diameter Rear Seal (Green), Grey Body, (Requires Wedgelock AW8P. Keyed Options Available.)	16	13A	250V
AT04-08PB-PM12	8 Position, Receptacle with Flange, Pin, PanelMate™ AT, Self-Threading, Gasket, Keyed B, Reduced Diameter Rear Seal (Green), Black Body, (Requires Wedgelock AW8P. Keyed Options Available.)	16	13A	250V
AT04-08PC-PM12	8 Position, Receptacle with Flange, Pin, PanelMate™ AT, Self-Threading, Gasket, Keyed C, Reduced Diameter Rear Seal (Green), Green Body, (Requires Wedgelock AW8P. Keyed Options Available.)	16	13A	250V
AT04-08PD-PM12	8 Position, Receptacle with Flange, Pin, PanelMate™ AT, Self-Threading, Gasket, Keyed D, Reduced Diameter Rear Seal (Green), Brown Body, (Requires Wedgelock AW8P. Keyed Options Available.)	16	13A	250V
AT04-08PA-PM13	8 Position, Receptacle with Flange, Pin, PanelMate™ AT, Self-Threading, Gasket, Keyed A, Standard Diameter Rear Seal (Red), End Cap, Grey Body, (Requires Wedgelock AW8P. Keyed Options Available.)	16	13A	250V
AT04-08PB-PM13	8 Position, Receptacle with Flange, Pin, PanelMate™ AT, Self-Threading, Gasket, Keyed B, Standard Diameter Rear Seal (Red), End Cap, Black Body, (Requires Wedgelock AW8P. Keyed Options Available.)	16	13A	250V
AT04-08PC-PM13	8 Position, Receptacle with Flange, Pin, PanelMate™ AT, Self-Threading, Gasket, Keyed C, Standard Diameter Rear Seal (Red), End Cap, Green Body, (Requires Wedgelock AW8P. Keyed Options Available.)	16	13A	250V
AT04-08PD-PM13	8 Position, Receptacle with Flange, Pin, PanelMate™ AT, Self-Threading, Gasket, Keyed D, Standard Diameter Rear Seal (Red), End Cap, Brown Body, (Requires Wedgelock AW8P. Keyed Options Available.)	16	13A	250V
AT04-08PA-PM14	8 Position, Receptacle with Flange, Pin, PanelMate™ AT, Self-Threading, Gasket, Keyed A, Reduced Diameter Rear Seal (Green), End Cap, Grey Body, (Requires Wedgelock AW8P. Keyed Options Available.)	16	13A	250V
AT04-08PB-PM14	8 Position, Receptacle with Flange, Pin, PanelMate™ AT, Self-Threading, Gasket, Keyed B, Reduced Diameter Rear Seal (Green), End Cap, Black Body, (Requires Wedgelock AW8P. Keyed Options Available.)	16	13A	250V
AT04-08PC-PM14	8 Position, Receptacle with Flange, Pin, PanelMate™ AT, Self-Threading, Gasket, Keyed C, Reduced Diameter Rear Seal (Green), End Cap, Green Body, (Requires Wedgelock AW8P. Keyed Options Available.)	16	13A	250V
AT04-08PD-PM14	8 Position, Receptacle with Flange, Pin, PanelMate™ AT, Self-Threading, Gasket, Keyed D, Reduced Diameter Rear Seal (Green), End Cap, Brown Body, (Requires Wedgelock AW8P. Keyed Options Available.)	16	13A	250V
AT04-08PA-PM15	8 Position, Receptacle with Flange, Pin, PanelMate™ AT, Self-Threading, Gasket, Keyed A, Standard Diameter Rear Seal (Red), Strain Relief, Grey Body, (Requires Wedgelock AW8P. Keyed Options Available.)	16	13A	250V
AT04-08PB-PM15	8 Position, Receptacle with Flange, Pin, PanelMate™ AT, Self-Threading, Gasket, Keyed B, Standard Diameter Rear Seal (Red), Strain Relief, Black Body, (Requires Wedgelock AW8P. Keyed Options Available.)	16	13A	250V
AT04-08PC-PM15	8 Position, Receptacle with Flange, Pin, PanelMate™ AT, Self-Threading, Gasket, Keyed C, Standard Diameter Rear Seal (Red), Strain Relief, Green Body, (Requires Wedgelock AW8P. Keyed Options Available.)	16	13A	250V
AT04-08PD-PM15	8 Position, Receptacle with Flange, Pin, PanelMate™ AT, Self-Threading, Gasket, Keyed D, Standard Diameter Rear Seal (Red), Strain Relief, Brown Body, (Requires Wedgelock AW8P. Keyed Options Available.)	16	13A	250V
AT04-08PA-PM16	8 Position, Receptacle with Flange, Pin, PanelMate™ AT, Self-Threading, Gasket, Keyed A, Reduced Diameter Rear Seal (Green), Strain Relief, Grey Body, (Requires Wedgelock AW8P. Keyed Options Available.)	16	13A	250V
AT04-08PB-PM16	8 Position, Receptacle with Flange, Pin, PanelMate™ AT, Self-Threading, Gasket, Keyed B, Reduced Diameter Rear Seal (Green), Strain Relief, Black Body, (Requires Wedgelock AW8P. Keyed Options Available.)	16	13A	250V
AT04-08PC-PM16	8 Position, Receptacle with Flange, Pin, PanelMate™ AT, Self-Threading, Gasket, Keyed C, Reduced Diameter Rear Seal (Green), Strain Relief, Green Body, (Requires Wedgelock AW8P. Keyed Options Available.)	16	13A	250V
AT04-08PD-PM16	8 Position, Receptacle with Flange, Pin, PanelMate™ AT, Self-Threading, Gasket, Keyed D, Reduced Diameter Rear Seal (Green), Strain Relief, Brown Body, (Requires Wedgelock AW8P. Keyed Options Available.)	16	13A	250V
AW8P	8 Position, Receptacle Wedgelock, Pin, Green Body	n/a	n/a	n/a
AT04-12PA-LE21	12 Position, Receptacle with Flange, Pin, PanelMate™ AT, Threaded Insert, Gasket, Keyed A, Reduced Diameter Rear Seal (Green), End Cap, Grey Body, (Requires Wedgelock AW12P. Keyed Options Available.)	16	13A	250V
AT04-12PB-LE21	12 Position, Receptacle with Flange, Pin, PanelMate™ AT, Threaded Insert, Gasket, Keyed B, Reduced Diameter Rear Seal (Green), End Cap, Black Body, (Requires Wedgelock AW12P. Keyed Options Available.)	16	13A	250V
AT04-12PC-LE21	12 Position, Receptacle with Flange, Pin, PanelMate™ AT, Threaded Insert, Gasket, Keyed C, Reduced Diameter Rear Seal (Green), End Cap, Green Body, (Requires Wedgelock AW12P. Keyed Options Available.)	16	13A	250V
AT04-12PD-LE21	12 Position, Receptacle with Flange, Pin, PanelMate™ AT, Threaded Insert, Gasket, Keyed D, Reduced Diameter Rear Seal (Green), End Cap, Brown Body, (Requires Wedgelock AW12P. Keyed Options Available.)	16	13A	250V

Part Number	Description	Contact Size	Amperage	Voltage
AT04-12PA-PM05	12 Position, Receptacle with Flange, Pin, PanelMate™ AT, Threaded Insert, Gasket, Standard Diameter Rear Seal (Red), Grey Body, (Requires Wedgelock AW12P. Keyed Options Available.)	16	13A	250V
AT04-12PA-PM11	12 Position, Receptacle with Flange, Pin, PanelMate™ AT, Self-Threading, Gasket, Keyed A, Standard Diameter Rear Seal (Red), Grey Body, (Requires Wedgelock AW12P. Keyed Options Available.)	16	13A	250V
AT04-12PB-PM11	12 Position, Receptacle with Flange, Pin, PanelMate™ AT, Self-Threading, Gasket, Keyed B, Standard Diameter Rear Seal (Red), Black Body, (Requires Wedgelock AW12P. Keyed Options Available.)	16	13A	250V
AT04-12PC-PM11	12 Position, Receptacle with Flange, Pin, PanelMate™ AT, Self-Threading, Gasket, Keyed C, Standard Diameter Rear Seal (Red), Green Body, (Requires Wedgelock AW12P. Keyed Options Available.)	16	13A	250V
AT04-12PD-PM11	12 Position, Receptacle with Flange, Pin, PanelMate™ AT, Self-Threading, Gasket, Keyed D, Standard Diameter Rear Seal (Red), Brown Body, (Requires Wedgelock AW12P. Keyed Options Available.)	16	13A	250V
AT04-12PA-PM12	12 Position, Receptacle with Flange, Pin, PanelMate™ AT, Self-Threading, Gasket, Keyed A, Reduced Diameter Rear Seal (Green), Grey Body, (Requires Wedgelock AW12P. Keyed Options Available.)	16	13A	250V
AT04-12PB-PM12	12 Position, Receptacle with Flange, Pin, PanelMate™ AT, Self-Threading, Gasket, Keyed B, Reduced Diameter Rear Seal (Green), Black Body, (Requires Wedgelock AW12P. Keyed Options Available.)	16	13A	250V
AT04-12PC-PM12	12 Position, Receptacle with Flange, Pin, PanelMate™ AT, Self-Threading, Gasket, Keyed C, Reduced Diameter Rear Seal (Green), Green Body, (Requires Wedgelock AW12P. Keyed Options Available.)	16	13A	250V
AT04-12PD-PM12	12 Position, Receptacle with Flange, Pin, PanelMate™ AT, Self-Threading, Gasket, Keyed D, Reduced Diameter Rear Seal (Green), Brown Body, (Requires Wedgelock AW12P. Keyed Options Available.)	16	13A	250V
AT04-12PA-PM13	12 Position, Receptacle with Flange, Pin, PanelMate™ AT, Self-Threading, Gasket, Keyed A, Standard Diameter Rear Seal (Red), End Cap, Grey Body, (Requires Wedgelock AW12P. Keyed Options Available.)	16	13A	250V
AT04-12PB-PM13	12 Position, Receptacle with Flange, Pin, PanelMate™ AT, Self-Threading, Gasket, Keyed B, Standard Diameter Rear Seal (Red), End Cap, Black Body, (Requires Wedgelock AW12P. Keyed Options Available.)	16	13A	250V
AT04-12PC-PM13	12 Position, Receptacle with Flange, Pin, PanelMate™ AT, Self-Threading, Gasket, Keyed C, Standard Diameter Rear Seal (Red), End Cap, Green Body, (Requires Wedgelock AW12P. Keyed Options Available.)	16	13A	250V
AT04-12PD-PM13	12 Position, Receptacle with Flange, Pin, PanelMate™ AT, Self-Threading, Gasket, Keyed D, Standard Diameter Rear Seal (Red), End Cap, Brown Body, (Requires Wedgelock AW12P. Keyed Options Available.)	16	13A	250V
AT04-12PA-PM14	12 Position, Receptacle with Flange, Pin, PanelMate™ AT, Self-Threading, Gasket, Keyed A, Reduced Diameter Rear Seal (Green), End Cap, Grey Body, (Requires Wedgelock AW12P. Keyed Options Available.)	16	13A	250V
AT04-12PB-PM14	12 Position, Receptacle with Flange, Pin, PanelMate™ AT, Self-Threading, Gasket, Keyed B, Reduced Diameter Rear Seal (Green), End Cap, Black Body, (Requires Wedgelock AW12P. Keyed Options Available.)	16	13A	250V
AT04-12PC-PM14	12 Position, Receptacle with Flange, Pin, PanelMate™ AT, Self-Threading, Gasket, Keyed C, Reduced Diameter Rear Seal (Green), End Cap, Green Body, (Requires Wedgelock AW12P. Keyed Options Available.)	16	13A	250V
AT04-12PD-PM14	12 Position, Receptacle with Flange, Pin, PanelMate™ AT, Self-Threading, Gasket, Keyed D, Reduced Diameter Rear Seal (Green), End Cap, Brown Body, (Requires Wedgelock AW12P. Keyed Options Available.)	16	13A	250V
AT04-12PA-PM15	12 Position, Receptacle with Flange, Pin, PanelMate™ AT, Self-Threading, Gasket, Keyed A, Standard Diameter Rear Seal (Red), Strain Relief, Grey Body, (Requires Wedgelock AW12P. Keyed Options Available.)	16	13A	250V
AT04-12PB-PM15	12 Position, Receptacle with Flange, Pin, PanelMate™ AT, Self-Threading, Gasket, Keyed B, Standard Diameter Rear Seal (Red), Strain Relief, Black Body, (Requires Wedgelock AW12P. Keyed Options Available.)	16	13A	250V
AT04-12PC-PM15	12 Position, Receptacle with Flange, Pin, PanelMate™ AT, Self-Threading, Gasket, Keyed C, Standard Diameter Rear Seal (Red), Strain Relief, Green Body, (Requires Wedgelock AW12P. Keyed Options Available.)	16	13A	250V
AT04-12PD-PM15	12 Position, Receptacle with Flange, Pin, PanelMate™ AT, Self-Threading, Gasket, Keyed D, Standard Diameter Rear Seal (Red), Strain Relief, Brown Body, (Requires Wedgelock AW12P. Keyed Options Available.)	16	13A	250V
AT04-12PA-PM16	12 Position, Receptacle with Flange, Pin, PanelMate™ AT, Self-Threading, Gasket, Keyed A, Reduced Diameter Rear Seal (Green), Strain Relief, Grey Body, (Requires Wedgelock AW12P. Keyed Options Available.)	16	13A	250V
AT04-12PB-PM16	12 Position, Receptacle with Flange, Pin, PanelMate™ AT, Self-Threading, Gasket, Keyed B, Reduced Diameter Rear Seal (Green), Strain Relief, Black Body, (Requires Wedgelock AW12P. Keyed Options Available.)	16	13A	250V
AT04-12PC-PM16	12 Position, Receptacle with Flange, Pin, PanelMate™ AT, Self-Threading, Gasket, Keyed C, Reduced Diameter Rear Seal (Green), Strain Relief, Green Body, (Requires Wedgelock AW12P. Keyed Options Available.)	16	13A	250V
AT04-12PD-PM16	12 Position, Receptacle with Flange, Pin, PanelMate™ AT, Self-Threading, Gasket, Keyed D, Reduced Diameter Rear Seal (Green), Strain Relief, Brown Body, (Requires Wedgelock AW12P. Keyed Options Available.)	16	13A	250V
AW12P	12 Position, Receptacle Wedgelock, Pin, Green Body	n/a	n/a	n/a
AT1612-13PB	13 Position, Receptacle with Flange, Pin, PanelMate™ AT, Self-Threading, No Gasket, Standard Diameter Rear Seal (Red), End Cap, Black Body, (No Add'l Wedgelock Required)	12-16	25A, 13A	250V
AT1612-13PB-G	13 Position, Receptacle with Flange, Pin, PanelMate™ AT, Self-Threading, Gasket, Standard Diameter Rear Seal (Red), End Cap, Black Body, (No Add'l Wedgelock Required)	12-16	25A, 13A	250V
AT1612-13PB-RD	13 Position, Receptacle with Flange, Pin, PanelMate™ AT, Self-Threading, No Gasket, Reduced Diameter Rear Seal (Green), End Cap, Black Body, (No Add'l Wedgelock Required)	12-16	25A, 13A	250V
AT1612-13PB-RDG	13 Position, Receptacle with Flange, Pin, PanelMate™ AT, Self-Threading, Gasket, Reduced Diameter Rear Seal (Green), End Cap, Black Body, (No Add'l Wedgelock Required)	12-16	25A, 13A	250V

Part Number	Description	Contact Size	Amperage	Voltage
AT16-15PA-PM11	15 Position, Receptacle with Flange, Pin (2 x Size 12 / 13 x Size 16 Contacts), PanelMate™ AT, Threaded Insert, Gasket, Keyed A, Reduced Diameter Rear Seal (Green), End Cap, Grey Body, (No Add'l Wedgelock Required)	12,16	25A, 13A	250
AT16-15PB-PM11	15 Position, Receptacle with Flange, Pin (2 x Size 12 / 13 x Size 16 Contacts), PanelMate™ AT, Threaded Insert, Gasket, Keyed B, Reduced Diameter Rear Seal (Green), End Cap, Black Body, (No Add'l Wedgelock Required)	12,16	25A, 13A	250
AT16-15PC-PM11	15 Position, Receptacle with Flange, Pin (2 x Size 12 / 13 x Size 16 Contacts), PanelMate™ AT, Threaded Insert, Gasket, Keyed C, Reduced Diameter Rear Seal (Green), End Cap, Green Body, (No Add'l Wedgelock Required)	12,16	25A, 13A	250
AT16-15PD-PM11	15 Position, Receptacle with Flange, Pin (2 x Size 12 / 13 x Size 16 Contacts), PanelMate™ AT, Threaded Insert, Gasket, Keyed D, Reduced Diameter Rear Seal (Green), End Cap, Brown Body, (No Add'l Wedgelock Required)	12,16	25A, 13A	250
AT16-15PE-PM11	15 Position, Receptacle with Flange, Pin (2 x Size 12 / 13 x Size 16 Contacts), PanelMate™ AT, Threaded Insert, Gasket, Keyed E, Reduced Diameter Rear Seal (Green), End Cap, Grey Body, (No Add'l Wedgelock Required)	12,16	25A, 13A	250
AT16-18PA-PM11	18 Position, Receptacle with Flange, Pin, PanelMate™ AT, Threaded Insert, Gasket, Keyed A, Reduced Diameter Rear Seal (Green), End Cap, Grey Body, (No Add'l Wedgelock Required)	16	13A	250V
AT16-18PB-PM11	18 Position, Receptacle with Flange, Pin, PanelMate™ AT, Threaded Insert, Gasket, Keyed B, Reduced Diameter Rear Seal (Green), End Cap, Black Body, (No Add'l Wedgelock Required)	16	13A	250V
AT16-18PC-PM11	18 Position, Receptacle with Flange, Pin, PanelMate™ AT, Threaded Insert, Gasket, Keyed C, Reduced Diameter Rear Seal (Green), End Cap, Green Body, (No Add'l Wedgelock Required)	16	13A	250V
AT16-18PD-PM11	18 Position, Receptacle with Flange, Pin, PanelMate™ AT, Threaded Insert, Gasket, Keyed D, Reduced Diameter Rear Seal (Green), End Cap, Brown Body, (No Add'l Wedgelock Required)	16	13A	250V
AT16-18PE-PM11	18 Position, Receptacle with Flange, Pin, PanelMate™ AT, Threaded Insert, Gasket, Keyed E, Reduced Diameter Rear Seal (Green), End Cap, Grey Body, (No Add'l Wedgelock Required)	16	13A	250V
AT16-18PA-PM15	18 Position, Receptacle with Flange, Pin, PanelMate™ AT, Self-Threading, Gasket, Keyed A, Reduced Diameter Rear Seal (Green), Strain Relief, Grey Body, (No Add'l Wedgelock Required)	16	13A	250V
AT16-18PB-PM15	18 Position, Receptacle with Flange, Pin, PanelMate™ AT, Self-Threading, Gasket, Keyed B, Reduced Diameter Rear Seal (Green), Strain Relief, Black Body, (No Add'l Wedgelock Required)	16	13A	250V
AT16-18PC-PM15	18 Position, Receptacle with Flange, Pin, PanelMate™ AT, Self-Threading, Gasket, Keyed C, Reduced Diameter Rear Seal (Green), Strain Relief, Green Body, (No Add'l Wedgelock Required)	16	13A	250V
AT16-18PD-PM15	18 Position, Receptacle with Flange, Pin, PanelMate™ AT, Self-Threading, Gasket, Keyed D, Reduced Diameter Rear Seal (Green), Strain Relief, Brown Body, (No Add'l Wedgelock Required)	16	13A	250V
AT16-18PE-PM15	18 Position, Receptacle with Flange, Pin, PanelMate™ AT, Self-Threading, Gasket, Keyed E, Reduced Diameter Rear Seal (Green), Strain Relief, Grey Body, (No Add'l Wedgelock Required)	16	13A	250V
AT04-XP-PM1X-G7	2, 3, 4 and 6 Position, Receptacle Gasket, PanelMate™ AT, Black Body	n/a	n/a	n/a
AT04-08PB-G7	8 Position, Receptacle Gasket, PanelMate™ AT, Black Body	n/a	n/a	n/a
AT1612-PB-G7	12 and 13 Position, Receptacle Gasket, PanelMate™ AT, Black Body	n/a	n/a	n/a

PanelMate™ AT - Receptacle with Welded Flange (See individual datasheets on www.amphenol-sine.com for full specs, faceviews, keying location and product dimensions.)

AT04-2P-L012	2 Position, Receptacle with Welded Flange Pin, PanelMate™ AT, Standard Diameter Rear Seal (Red), Grey Body, (Requires Wedgelock AW2P. Keyed Options Available.)	16	13A	250V
AW2P	2 Position, Receptacle Wedgelock, Green Body	n/a	n/a	n/a
AW2P-A	2 Position, Receptacle Wedgelock, Keyed A Grey Body	n/a	n/a	n/a
AW2P-B	2 Position, Receptacle Wedgelock, Keyed B Black Body	n/a	n/a	n/a
AW2P-C	2 Position, Receptacle Wedgelock, Keyed C Green Body	n/a	n/a	n/a
AW2P-D	2 Position, Receptacle Wedgelock, Keyed D Brown Body			
AT04-3P-CL03	3 Position, Receptacle with Welded Flange Pin, PanelMate™ AT, Reduced Diameter Rear Seal (Green), Grey Body, (Requires Wedgelock AW3P.)	16	13A	250V
AT04-3P-CL06	3 Position, Receptacle with Welded Flange Pin, PanelMate™ AT, Reduced Diameter Rear Seal (Green), Black Body, (Requires Wedgelock AW3P.)	16	13A	250V
AT04-3P-L012	3 Position, Receptacle with Welded Flange Pin, PanelMate™ AT, Standard Diameter Rear Seal (Red), Grey Body, (Requires Wedgelock AW3P.)	16	13A	250V

Part Number	Description	Contact Size	Amperage	Voltage
AT04-3P-LE08	3 Position, Receptacle with Welded Flange Pin, PanelMate™ AT, Standard Diameter Rear Seal (Red), Shrink Boot End Cap, Grey Body, (Requires Wedgelock AW3P.)	16	13A	250V
AT04-3P-LE12	3 Position, Receptacle with Welded Flange Pin, PanelMate™ AT, Standard Diameter Rear Seal (Red), Shrink Boot End Cap, Black Body, (Requires Wedgelock AW2P.)	16	13A	250V
AW3P	3 Position, Receptacle Wedgelock, Green Body	n/a	n/a	n/a
AW3P-J1939	3 Position, Receptacle Wedgelock J-1939, Blue Body	n/a	n/a	n/a
AT04-4P-CL03	4 Position, Receptacle with Welded Flange Pin, PanelMate™ AT, Reduced Diameter Rear Seal (Green), Grey Body, (Requires Wedgelock AW2P.)	16	13A	250V
AT04-4P-CL06	4 Position, Receptacle with Welded Flange Pin, PanelMate™ AT, Reduced Diameter Rear Seal (Green), Black Body, (Requires Wedgelock AW2P.)	16	13A	250V
AT04-4P-L012	4 Position, Receptacle with Welded Flange Pin, PanelMate™ AT, Standard Diameter Rear Seal (Red), Grey Body, (Requires Wedgelock AW2P.)	16	13A	250V
AT04-4P-LE11	4 Position, Receptacle with Welded Flange Pin, PanelMate™ AT, Standard Diameter Rear Seal (Red), End Cap, Black Body, (Requires Wedgelock AW2P.)	16	13A	250V
AW4P	4 Position, Receptacle Wedgelock, Green Body	n/a	n/a	n/a
AT04-6P-CL06	6 Position, Receptacle with Welded Flange Pin, PanelMate™ AT, Reduced Diameter Rear Seal (Green), Black Body, (Requires Wedgelock AW2P.)	16	13A	250V
AT04-6P-L012	6 Position, Receptacle with Welded Flange Pin, PanelMate™ AT, Reduced Diameter Rear Seal (Green), Grey Body, (Requires Wedgelock AW2P.)	16	13A	250V
AW6P	6 Position, Receptacle Wedgelock,	n/a	n/a	n/a
AT04-08PA-CL03	8 Position, Receptacle with Welded Flange Pin, PanelMate™ AT, Keyed A, Reduced Diameter Rear Seal (Green), Grey Body, (Requires Wedgelock AW2P. Keyed Options Available.)	16	13A	250V
AT04-08PA-CL06	8 Position, Receptacle with Welded Flange Pin, PanelMate™ AT, Keyed A, Reduced Diameter Rear Seal (Green), Black Body, (Requires Wedgelock AW2P. Keyed Options Available.)	16	13A	250V
AT04-08PA-L012	8 Position, Receptacle with Welded Flange Pin, PanelMate™ AT, Keyed A, Standard Diameter Rear Seal (Red), Grey Body, (Requires Wedgelock AW2P. Keyed Options Available.)	16	13A	250V
AT04-08PB-L012	8 Position, Receptacle with Welded Flange Pin, PanelMate™ AT, Keyed B, Standard Diameter Rear Seal (Red), Black Body, (Requires Wedgelock AW2P. Keyed Options Available.)	16	13A	250V
AT04-08PC-L012	8 Position, Receptacle with Welded Flange Pin, PanelMate™ AT, Keyed C, Standard Diameter Rear Seal (Red), Green Body, (Requires Wedgelock AW2P. Keyed Options Available.)	16	13A	250V
AT04-08PD-L012	8 Position, Receptacle with Welded Flange Pin, PanelMate™ AT, Keyed D, Standard Diameter Rear Seal (Red), Brown Body, (Requires Wedgelock AW2P. Keyed Options Available.)	16	13A	250V
AT04-08PA-LE11	8 Position, Receptacle with Welded Flange Pin, PanelMate™ AT, Keyed E, Standard Diameter Rear Seal (Red), End Cap, Black Body, (Requires Wedgelock AW2P. Keyed Options Available.)	16	13A	250V
AW8P	8 Position, Receptacle Wedgelock	n/a	n/a	n/a
AT04-12PA-BL04	12 Position, Receptacle with Welded Flange Pin, PanelMate™ AT, Keyed A, Enhanced Key, Standard Diameter Rear Seal (Red), Grey Body, (Requires Wedgelock AW2P. Keyed Options Available.)	16	13A	250V
AT04-12PB-BL04	12 Position, Receptacle with Welded Flange Pin, PanelMate™ AT, Keyed B, Enhanced Key, Standard Diameter Rear Seal (Red), Black body, (Requires Wedgelock AW2P. Keyed Options Available.)	16	13A	250V
AT04-12PC-BL04	12 Position, Receptacle with Welded Flange Pin, PanelMate™ AT, Keyed C, Enhanced Key, Standard Diameter Rear Seal (Red), Green Body, (Requires Wedgelock AW2P. Keyed Options Available.)	16	13A	250V
AT04-12PD-BL04	12 Position, Receptacle with Welded Flange Pin, PanelMate™ AT, Keyed D, Enhanced Key, Standard Diameter Rear Seal (Red), Brown Body, (Requires Wedgelock AW2P. Keyed Options Available.)	16	13A	250V
AT04-12PA-BL05	12 Position, Receptacle with Welded Flange Pin, PanelMate™ AT, Keyed A, Enhanced Key, Standard Diameter Rear Seal (Red), End Cap, Grey Body, (Requires Wedgelock AW2P. Keyed Options Available.)	16	13A	250V
AT04-12PB-BL05	12 Position, Receptacle with Welded Flange Pin, PanelMate™ AT, Keyed B, Enhanced Key, Standard Diameter Rear Seal (Red), End Cap, Black body, (Requires Wedgelock AW2P. Keyed Options Available.)	16	13A	250V
AT04-12PC-BL05	12 Position, Receptacle with Welded Flange Pin, PanelMate™ AT, Keyed C, Enhanced Key, Standard Diameter Rear Seal (Red), End Cap, Green Body, (Requires Wedgelock AW2P. Keyed Options Available.)	16	13A	250V

Part Number	Description	Contact Size	Amperage	Voltage
AT04-12PD-BL05	12 Position, Receptacle with Welded Flange Pin, PanelMate™ AT, Keyed D, Enhanced Key, Standard Diameter Rear Seal (Red), End Cap, Brown Body, (Requires Wedgelock AW2P. Keyed Options Available.)	16	13A	250V
AT04-12PA-BL08	12 Position, Receptacle with Welded Flange Pin, PanelMate™ AT, Keyed A, Enhanced Key, Standard Diameter Rear Seal (Red), Black body, (Requires Wedgelock AW2P. Keyed Options Available.)	16	13A	250V
AT04-12PA-CL03	12 Position, Receptacle with Welded Flange Pin, PanelMate™ AT, Keyed A, Reduced Diameter Rear Seal (Green), Grey Body, (Requires Wedgelock AW2P. Keyed Options Available.)	16	13A	250V
AT04-12PB-CL03	12 Position, Receptacle with Welded Flange Pin, PanelMate™ AT, Keyed B, Reduced Diameter Rear Seal (Green), Black body, (Requires Wedgelock AW2P. Keyed Options Available.)	16	13A	250V
AT04-12PC-CL03	12 Position, Receptacle with Welded Flange Pin, PanelMate™ AT, Keyed C, Reduced Diameter Rear Seal (Green), Green Body, (Requires Wedgelock AW2P. Keyed Options Available.)	16	13A	250V
AT04-12PD-CL03	12 Position, Receptacle with Welded Flange Pin, PanelMate™ AT, Keyed D, Reduced Diameter Rear Seal (Green), Brown Body, (Requires Wedgelock AW2P. Keyed Options Available.)	16	13A	250V
AT04-12PA-CL06	12 Position, Receptacle with Welded Flange Pin, PanelMate™ AT, Keyed A, Reduced Diameter Rear Seal (Green), Black body, (Requires Wedgelock AW2P. Keyed Options Available.)	16	13A	250V
AT04-12PA-L012	12 Position, Receptacle with Welded Flange Pin, PanelMate™ AT, Keyed A, Standard Diameter Rear Seal (Red), Grey Body, (Requires Wedgelock AW2P. Keyed Options Available.)	16	13A	250V
AT04-12PB-L012	12 Position, Receptacle with Welded Flange Pin, PanelMate™ AT, Keyed B, Standard Diameter Rear Seal (Red), Black body, (Requires Wedgelock AW2P. Keyed Options Available.)	16	13A	250V
AT04-12PC-L012	12 Position, Receptacle with Welded Flange Pin, PanelMate™ AT, Keyed C, Standard Diameter Rear Seal (Red), Green Body, (Requires Wedgelock AW2P. Keyed Options Available.)	16	13A	250V
AT04-12PD-L012	12 Position, Receptacle with Welded Flange Pin, PanelMate™ AT, Keyed D, Standard Diameter Rear Seal (Red), Brown Body, (Requires Wedgelock AW2P. Keyed Options Available.)	16	13A	250V
AT04-12PA-LE07	12 Position, Receptacle with Welded Flange Pin, PanelMate™ AT, Keyed A, Standard Diameter Rear Seal (Red), End Cap, Grey Body, (Requires Wedgelock AW2P. Keyed Options Available.)	16	13A	250V
AT04-12PB-LE07	12 Position, Receptacle with Welded Flange Pin, PanelMate™ AT, Keyed B, Standard Diameter Rear Seal (Red), End Cap, Black body, (Requires Wedgelock AW2P. Keyed Options Available.)	16	13A	250V
AT04-12PC-LE07	12 Position, Receptacle with Welded Flange Pin, PanelMate™ AT, Keyed C, Standard Diameter Rear Seal (Red), End Cap, Green Body, (Requires Wedgelock AW2P. Keyed Options Available.)	16	13A	250V
AT04-12PD-LE07	12 Position, Receptacle with Welded Flange Pin, PanelMate™ AT, Keyed D, Standard Diameter Rear Seal (Red), End Cap, Brown Body, (Requires Wedgelock AW2P. Keyed Options Available.)	16	13A	250V
AT04-12PA-LE14	12 Position, Receptacle with Welded Flange Pin, PanelMate™ AT, Keyed A, Standard Diameter Rear Seal (Red), Black Body, (Requires Wedgelock AW2P. Keyed Options Available.)	16	13A	250V
AT04-12PA-PM01	12 Position, Receptacle with Welded Flange Pin, PanelMate™ AT, Keyed A, Standard Diameter Rear Seal (Red), Grey Body, (Requires Wedgelock AWxP. Keyed Options Available.)	16	13A	250V
AT04-12PB-PM01	12 Position, Receptacle with Welded Flange Pin, PanelMate™ AT, Keyed B, Standard Diameter Rear Seal (Red), Black Body, (Requires Wedgelock AWxP. Keyed Options Available.)	16	13A	250V
AT04-12PA-PM02	12 Position, Receptacle with Welded Flange Pin, PanelMate™ AT, Keyed A, Reduced Diameter Rear Seal (Green), Grey Body, (Requires Wedgelock AWxP. Keyed Options Available.)	16	13A	250V
AT04-12PB-PM02	12 Position, Receptacle with Welded Flange Pin, PanelMate™ AT, Keyed B, Reduced Diameter Rear Seal (Green), Black Body, (Requires Wedgelock AWxP. Keyed Options Available.)	16	13A	250V
AW12P	12 Position, Receptacle Wedgelock, Green Body	n/a	n/a	n/a

PanelMate™ ATM - Receptacle with Flange (See individual datasheets on www.amphenol-sine.com for full specs, faceviews, keying location and product dimensions.)

ATM04-12PA-PM31	12 Position, Receptacle with Flange, Pin, PanelMate™ ATM, Gasket, Keyed A (Grey Insert), Standard Diameter Rear Seal (Red), Grey Body, (Requires Wedgelock AWM-12P)	20	7.5A	250V
ATM04-12PB-PM31	12 Position, Receptacle with Flange, Pin, PanelMate™ ATM, Gasket, Keyed B (Black Insert), Standard Diameter Rear Seal (Red), Black Body, (Requires Wedgelock AWM-12P)	20	7.5A	250V
ATM04-12PC-PM31	12 Position, Receptacle with Flange, Pin, PanelMate™ ATM, Gasket, Keyed C (Green Insert), Standard Diameter Rear Seal (Red), Green Body, (Requires Wedgelock AWM-12P)	20	7.5A	250V
ATM04-12PD-PM31	12 Position, Receptacle with Flange, Pin, PanelMate™ ATM, Gasket, Keyed D (Brown Insert), Standard Diameter Rear Seal (Red), Brown Body, (Requires Wedgelock AWM-12P)	20	7.5A	250V
AWM-12P	12 Position, Receptacle Wedgelock, PanelMate™ ATM, Green Body	n/a	n/a	n/a

PanelMate™ ATM - Receptacle w 4 Hole Welded Flange (See individual datasheets on www.amphenol-sine.com for full specs, faceviews, keying location and product dimensions.)

ATM04-12PA-PM01	12 Position, Receptacle with Welded Flange, Pin, PanelMate™ ATM, Keyed A (Grey Insert), Standard Diameter Rear Seal (Red), Grey Body, (Requires Wedgelock AWM-12P)	20	7.5A	250V
ATM04-12PB-PM01	12 Position, Receptacle with Welded Flange, Pin, PanelMate™ ATM, Keyed B (Black Insert), Standard Diameter Rear Seal (Red), Grey Body, (Requires Wedgelock AWM-12P)	20	7.5A	250V
ATM04-12PC-PM01	12 Position, Receptacle with Welded Flange, Pin, PanelMate™ ATM, Keyed C (Green Insert), Standard Diameter Rear Seal (Red), Grey Body, (Requires Wedgelock AWM-12P)	20	7.5A	250V

Part Number	Description	Contact Size	Amperage	Voltage
ATM04-12PD-PM01	12 Position, Receptacle with Welded Flange, Pin, PanelMate™ ATM, Keyed D (Brown Insert), Standard Diameter Rear Seal (Red), Grey Body, (Requires Wedgelock AWM-12P)	20	7.5A	250V
AWM-12P	12 Position, Receptacle Wedgelock, PanelMate™ ATM, Green Body	n/a	n/a	n/a

PanelMate™ ATP - Receptacle w Flange (See individual datasheets on www.amphenol-sine.com for full specs, faceviews, keying location and product dimensions.)

ATP04-2P-PM07G	2 Position, Receptacle with Flange, Pin, PanelMate™ ATP, Self-Threading, Gasket, Standard Diameter Rear Seal (Red), Black Body, (Requires Wedgelock AWP-2P. Keyed Options Available.)	12	25A	250V
ATP04-2P-PM07GEC	2 Position, Receptacle with Flange, Pin, PanelMate™ ATP, Self-Threading, Gasket, Standard Diameter Rear Seal (Red), End Cap, Black Body, (Requires Wedgelock AWP-2P. Keyed Options Available.)	12	25A	250V
ATP04-2P-PM08G	2 Position, Receptacle with Flange, Pin, PanelMate™ ATP, Self-Threading, Gasket, Standard Diameter Rear Seal (Red), Grey Body, (Requires Wedgelock AWP-2P. Keyed Options Available.)	12	25A	250V
ATP04-2P-PM08GEC	2 Position, Receptacle with Flange, Pin, PanelMate™ ATP, Self-Threading, Gasket, Standard Diameter Rear Seal (Red), End Cap, Grey Body, (Requires Wedgelock AWP-2P. Keyed Options Available.)	12	25A	250V
AWP-2P	2 Position, Receptacle Wedgelock, Orange Body	n/a	n/a	n/a
AWP-2PA	2 Position, Receptacle Wedgelock, Keyed A, Grey Body	n/a	n/a	n/a
AWP-2PB	2 Position, Receptacle Wedgelock, Keyed B, Black Body	n/a	n/a	n/a
AWP-2PC	2 Position, Receptacle Wedgelock, Keyed C, Green Body	n/a	n/a	n/a
AWP-2PD	2 Position, Receptacle Wedgelock, Keyed D, Brown Body	n/a	n/a	n/a
ATP04-4P-PM01	4 Position, Receptacle with Flange, Pin, PanelMate™ ATP, Standard Diameter Rear Seal (Red), Grey Body, (Requires Wedgelock AWP-4P. Keyed Options Available.)	12	25A	250V
ATP04-4P-PM02	4 Position, Receptacle with Flange, Pin, PanelMate™ ATP, Standard Diameter Rear Seal (Red), End Cap, Grey Body, (Requires Wedgelock AWP-4P. Keyed Options Available.)	12	25A	250V
ATP04-4P-PM07G	4 Position, Receptacle with Flange, Pin, PanelMate™ ATP, Self-Threading, Gasket, Standard Diameter Rear Seal (Red), Black Body, (Requires Wedgelock AWP-4P. Keyed Options Available.)	12	25A	250V
ATP04-4P-PM07GEC	4 Position, Receptacle with Flange, Pin, PanelMate™ ATP, Self-Threading, Gasket, Standard Diameter Rear Seal (Red), End Cap, Black Body, (Requires Wedgelock AWP-4P. Keyed Options Available.)	12	25A	250V
ATP04-4P-PM08G	4 Position, Receptacle with Flange, Pin, PanelMate™ ATP, Self-Threading, Gasket, Standard Diameter Rear Seal (Red), Grey Body, (Requires Wedgelock AWP-4P. Keyed Options Available.)	12	25A	250V
ATP04-4P-PM08GEC	4 Position, Receptacle with Flange, Pin, PanelMate™ ATP, Self-Threading, Gasket, Standard Diameter Rear Seal (Red), End Cap, Grey Body, (Requires Wedgelock AWP-4P. Keyed Options Available.)	12	25A	250V
AWP-4P	4 Position, Receptacle Wedgelock, Orange Body	n/a	n/a	n/a
AWP-4PA	4 Position, Receptacle Wedgelock, Keyed A, Grey Body	n/a	n/a	n/a
AWP-4PB	4 Position, Receptacle Wedgelock, Keyed B, Black Body	n/a	n/a	n/a
AWP-4PC	4 Position, Receptacle Wedgelock, Keyed C, Green Body	n/a	n/a	n/a
AWP-4PD	4 Position, Receptacle Wedgelock, Keyed D, Brown Body	n/a	n/a	n/a
ATP4P-L012-GKT	4 Position, Receptacle Gasket, Black Body (Use with ATP04-4P-PM01/PM02)	n/a	n/a	n/a
ATP04-6P-PM05	6 Position, Receptacle with Flange, Pin, PanelMate™ ATP, Threaded Insert, Gasket, Standard Diameter Rear Seal (Red), Grey Body, (Requires Wedgelock AWP-6P. Keyed Options Available.)	12	25A	250V
ATP04-6P-PM05BK	6 Position, Receptacle with Flange, Pin, PanelMate™ ATP, Threaded Insert, Gasket, Standard Diameter Rear Seal (Red), Black Body, (Requires Wedgelock AWP-6P. Keyed Options Available.)	12	25A	250V
ATP04-6P-PM05EC	6 Position, Receptacle with Flange, Pin, PanelMate™ ATP, Threaded Insert, Gasket, Standard Diameter Rear Seal (Red), End Cap, Grey Body, (Requires Wedgelock AWP-6P. Keyed Options Available.)	12	25A	250V
ATP04-6P-PM05ECBK	6 Position, Receptacle with Flange, Pin, PanelMate™ ATP, Threaded Insert, Gasket, Standard Diameter Rear Seal (Red), End Cap, Black Body, (Requires Wedgelock AWP-6P. Keyed Options Available.)	12	25A	250V
ATP04-6P-PM05SR	6 Position, Receptacle with Flange, Pin, PanelMate™ ATP, Threaded Insert, Gasket, Standard Diameter Rear Seal (Red), Grey Body, (Requires Wedgelock AWP-6P. Keyed Options Available.)	12	25A	250V

Part Number	Description	Contact Size	Amperage	Voltage
ATP04-6P-PM05SRBK	6 Position, Receptacle with Flange, Pin, PanelMate™ ATP, Threaded Insert, Gasket, Standard Diameter Rear Seal (Red), Black Body, (Requires Wedgelock AWP-6P. Keyed Options Available.)	12	25A	250V
ATP04-6P-PM06	6 Position, Receptacle with Flange, Pin, PanelMate™ ATP, Threaded Insert, Gasket, Reduced Diameter Rear Seal (Green), Grey Body, (Requires Wedgelock AWP-6P. Keyed Options Available.)	12	25A	250V
ATP04-6P-PM06BK	6 Position, Receptacle with Flange, Pin, PanelMate™ ATP, Threaded Insert, Gasket, Reduced Diameter Rear Seal (Green), Black Body, (Requires Wedgelock AWP-6P. Keyed Options Available.)	12	25A	250V
ATP04-6P-PM06EC	6 Position, Receptacle with Flange, Pin, PanelMate™ ATP, Threaded Insert, Gasket, Standard Diameter Rear Seal (Red), End Cap, Grey Body, (Requires Wedgelock AWP-6P. Keyed Options Available.)	12	25A	250V
ATP04-6P-PM06ECBK	6 Position, Receptacle with Flange, Pin, PanelMate™ ATP, Threaded Insert, Gasket, Standard Diameter Rear Seal (Red), End Cap, Black Body, (Requires Wedgelock AWP-6P. Keyed Options Available.)	12	25A	250V
ATP04-6P-PM06SR	6 Position, Receptacle with Flange, Pin, PanelMate™ ATP, Threaded Insert, Gasket, Reduced Diameter Rear Seal (Green), Grey Body, (Requires Wedgelock AWP-6P. Keyed Options Available.)	12	25A	250V
ATP04-6P-PM06SRBK	6 Position, Receptacle with Flange, Pin, PanelMate™ ATP, Threaded Insert, Gasket, Reduced Diameter Rear Seal (Green), Black Body, (Requires Wedgelock AWP-6P. Keyed Options Available.)	12	25A	250V
ATP04-6P-PM11	6 Position, Receptacle with Flange, Pin, PanelMate™ ATP, Self-Threading, Gasket, Reduced Diameter Rear Seal (Green), Grey Body, (Requires Wedgelock AWP-6P. Keyed Options Available.)	12	25A	250V
ATP04-6P-PM11BK	6 Position, Receptacle with Flange, Pin, PanelMate™ ATP, Self-Threading, Gasket, Reduced Diameter Rear Seal (Green), Black Body, (Requires Wedgelock AWP-6P. Keyed Options Available.)	12	25A	250V
ATP04-6P-PM12	6 Position, Receptacle with Flange, Pin, PanelMate™ ATP, Self-Threading, Gasket, Reduced Diameter Rear Seal (Green), Grey Body, (Requires Wedgelock AWP-6P. Keyed Options Available.)	12	25A	250V
ATP04-6P-PM12BK	6 Position, Receptacle with Flange, Pin, PanelMate™ ATP, Self-Threading, Gasket, Reduced Diameter Rear Seal (Green), Black Body, (Requires Wedgelock AWP-6P. Keyed Options Available.)	12	25A	250V
ATP04-6P-PM13	6 Position, Receptacle with Flange, Pin, PanelMate™ ATP, Self-Threading, Gasket, Reduced Diameter Rear Seal (Green), End Cap, Grey Body, (Requires Wedgelock AWP-6P. Keyed Options Available.)	12	25A	250V
ATP04-6P-PM13BK	6 Position, Receptacle with Flange, Pin, PanelMate™ ATP, Self-Threading, Gasket, Reduced Diameter Rear Seal (Green), End Cap, Black Body, (Requires Wedgelock AWP-6P. Keyed Options Available.)	12	25A	250V
ATP04-6P-PM14	6 Position, Receptacle with Flange, Pin, PanelMate™ ATP, Self-Threading, Gasket, Reduced Diameter Rear Seal (Green), End Cap, Grey Body, (Requires Wedgelock AWP-6P. Keyed Options Available.)	12	25A	250V
ATP04-6P-PM14BK	6 Position, Receptacle with Flange, Pin, PanelMate™ ATP, Self-Threading, Gasket, Reduced Diameter Rear Seal (Green), End Cap, Black Body, (Requires Wedgelock AWP-6P. Keyed Options Available.)	12	25A	250V
ATP04-6P-PM15	6 Position, Receptacle with Flange, Pin, PanelMate™ ATP, Self-Threading, Gasket, Reduced Diameter Rear Seal (Green), Grey Body, (Requires Wedgelock AWP-6P. Keyed Options Available.)	12	25A	250V
ATP04-6P-PM15BK	6 Position, Receptacle with Flange, Pin, PanelMate™ ATP, Self-Threading, Gasket, Reduced Diameter Rear Seal (Green), Black Body, (Requires Wedgelock AWP-6P. Keyed Options Available.)	12	25A	250V
ATP04-6P-PM16	6 Position, Receptacle with Flange, Pin, PanelMate™ ATP, Self-Threading, Gasket, Reduced Diameter Rear Seal (Green), Grey Body, (Requires Wedgelock AWP-6P. Keyed Options Available.)	12	25A	250V
ATP04-6P-PM16BK	6 Position, Receptacle with Flange, Pin, PanelMate™ ATP, Self-Threading, Gasket, Reduced Diameter Rear Seal (Green), Black Body, (Requires Wedgelock AWP-6P. Keyed Options Available.)	12	25A	250V
AWP-6P	6 Position, Receptacle Wedgelock, Orange Body	n/a	n/a	n/a
AWP-6PA	6 Position, Receptacle Wedgelock, Keyed A, Grey Body	n/a	n/a	n/a
AWP-6PB	6 Position, Receptacle Wedgelock, Keyed B, Black Body	n/a	n/a	n/a

PanelMate™ ATHD - Receptacle w Flange (See individual datasheets on www.amphenol-sine.com for full specs, faceviews, keying location and product dimensions.)

ATHD04-1-4P-L009	Single Position, Receptacle with Flange, Inside Mount, Pin, PanelMate™ ATHD, Self-Threading, Gasket, Standard Diameter Rear Seal (Red), Black Body	4	100A	1000V
ATHD04-1-4P-L013	Single Position, Receptacle with Flange, Outside Mount, Pin, PanelMate™ ATHD, Self-Threading, Gasket, Standard Diameter Rear Seal (Red), Black Body	4	100A	1000V
ATHD04-1-8P-PM05	Single Position, Receptacle with Flange, Pin, PanelMate™ ATHD, Threaded Insert, Gasket, Standard Diameter Rear Seal (Red), Black Body	8	60A	500V
ATHD04-1-8P-PM11	Single Position, Receptacle with Flange, Pin, PanelMate™ ATHD, Self-Threading, Gasket, Standard Diameter Rear Seal (Red), Black Body	8	60A	500V
ATHD04-1-12P-PM05	Single Position, Receptacle with Flange, Pin, PanelMate™ ATHD, Threaded Insert, Gasket, Standard Diameter Rear Seal (Red), Black Body	12	25A	500V
ATHD04-1-12P-PM11	Single Position, Receptacle with Flange, Pin, PanelMate™ ATHD, Self-Threading, Gasket, Standard Diameter Rear Seal (Red), Black Body	12	25A	500V