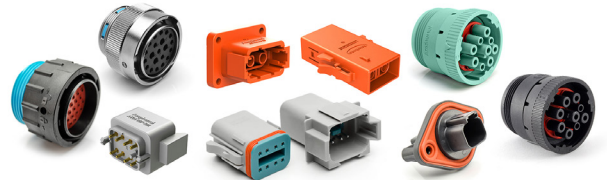




A Series™ Contacts



Machined and Stamped & Formed Precision Connector Contacts

Amphenol Sine Systems is your trusted component source for precision connector contacts designed for increased reliability and reduced cost. Our A Series™ contacts are readily available in a wide variety of materials and plating combinations and can be supplied with a number of different contact types.

Applications: Heavy Equipment, Agricultural, Automotive, Military, Alternate Energy, and other demanding interconnect architectures

Machined Contact Options

- Designed for heavy duty applications, these solid contacts will accommodate greater wire sizes
- Wire Size Range: 4AWG to 24AWG (25 - 0.25mm²)
- Available in Size 4, 8, 12, 16 and 20, in both Pin and Socket
- Current Ratings up to 100A
- Copper Alloy, Nickel-Plated
- Gold plating options available



Stamped & Formed Contact Options

- Precision engineered stamped & formed design provides cost effective wire processing, while ensuring high reliability conductor termination and performance
- Wire Size Range: 10AWG to 22AWG (6.0 - 0.35mm²)
- Available in Size 12, 16 and 20, in both Pin and Socket
- Current Ratings up to 25A
- Copper Alloy, Nickel-Plated
- Gold plating options available



A Series™ Family

Heavy Duty, Multi-Pin Plastic and Metal Connectors

Amphenol Sine Systems' A Series™ Family of sealed heavy-duty, multi-pin plastic and metal connectors include a wide range of products serving many industries. The connectors were developed as a high-performance, cost-effective solution for use with Heavy Equipment, Agricultural, Automotive, Military, Alternate Energy, and other demanding interconnect architectures. The A Series Family bridges the gap between controlled and harsh environmental conditions to keep you connected.

We can custom design, engineer and manufacture cable assemblies to your exact customer specifications and produce large or small quantities, all to the highest standards, delivered on-time and in-specification, all with a significant cost-savings over the competition.

By combining locally based Program Management & Engineering, along with the associated cost advantages derived from manufacturing in our low-cost production centers in North America and Asia, our Team will work with you to design the most cost-efficient and reliable interconnect system available.



Standard products. Custom solutions
Customer Service +1 800 394 7732

Part Number	A Series Product Lines	Style	Size	AWG	Amps	Pin or Socket	Plating
AT60-204-0490	DuraMate™, ATHD	Machined	4	6	100	Pin	Nickel
AT62-203-04141	DuraMate™, ATHD	Machined	4	6	100	Socket	Nickel
AT60-203-04141-4	DuraMate™	Machined	4	4	100	Pin	Nickel
AT62-203-04141-4	DuraMate™	Machined	4	4	100	Socket	Nickel
AT60-204-08141	DuraMate™, ATHD	Machined	8	8-10	60	Pin	Nickel
AT62-203-08141	DuraMate™, ATHD	Machined	8	8-10	100	Socket	Nickel
AT60-204-12141	ATP/AHD-6/DuraMate™, ATHD	Machined	12	12-14	25	Pin	Nickel
AT60-220-1231	ATP/AHD-6/DuraMate™, ATHD	Machined	12	12-14	25	Pin	Gold
AT62-203-12141	ATP, AHD-6, DuraMate™, ATHD	Machined	12	12-14	25	Socket	Nickel
AT62-210-1231	ATP,AHD-6, DuraMate™, ATHD	Machined	12	12-14	25	Socket	Gold
AT60-204-12141-10	ATP	Machined	12	10-12	25	Pin	Nickel
AT62-203-12141-10	ATP	Machined	12	10-12	25	Socket	Nickel
AT60-202-16141	AT/AHD-9/DuraMate™	Machined	16	16-20	13	Pin	Nickel
AT60-202-1631	AT/AHD-9/DuraMate™	Machined	16	16-20	13	Pin	Gold
AT60-215-16141	AT/AHD-9/DuraMate™	Machined	16	14	13	Pin	Nickel
AT60-215-1631	AT/AHD-9/DuraMate™	Machined	16	14	13	Pin	Gold
AT62-201-16141	AT, AHD-9, DuraMate™	Machined	16	16-20	13	Socket	Nickel
AT62-201-1631	AT, AHD-9, DuraMate™	Machined	16	16-20	13	Socket	Gold
AT62-209-16141	AT/AHD-9/DuraMate™	Machined	16	14	13	Socket	Nickel
AT62-209-1631	AT/AHD-9/DuraMate™	Machined	16	14	13	Socket	Gold
AT60-202-16141-22	AT/AHD-9/DuraMate™	Machined	16	22-24	13	Pin	Nickel
AT60-202-1631-22	AT/AHD-9/DuraMate™	Machined	16	22-24	13	Pin	Gold
AT62-201-16141-22	AT, AHD-9, DuraMate™	Machined	16	22-24	13	Socket	Nickel
AT62-201-1631-22	AT/AHD-9/DuraMate™	Machined	16	22-24	13	Socket	Gold
AT60-202-20141	ATM/ DuraMate™	Machined	20	20	7.5	Pin	Nickel
AT60-202-2031	ATM/ DuraMate™	Machined	20	20	7.5	Pin	Gold
AT62-201-20141	ATM/ DuraMate™	Machined	20	20	7.5	Socket	Nickel
AT62-201-2031	ATM/ DuraMate™	Machined	20	20	7.5	Socket	Gold
AT60-010-20141	ATM/ DuraMate™	Machined	20	16-18	7.5	Pin	Nickel
AT60-010-2031	ATM/ DuraMate™	Machined	20	16-18	7.5	Pin	Gold
AT62-005-20141	ATM/ DuraMate™	Machined	20	16-18	7.5	Socket	Nickel
AT62-005-2031	ATM/ DuraMate™	Machined	20	16-18	7.5	Socket	Gold
AT60-12-0144	ATP/AHD-6/DuraMate™	Stamped & Formed	12	12-14	25	Pin	Gold
AT60-12-0166	ATP/AHD-6/DuraMate™	Stamped & Formed	12	12-14	25	Pin	Nickel
AT60-12-0222	ATP/DuraMate™	Stamped & Formed	12	10-12	25	Pin	Nickel
AT60-12-0244	AT/DuraMate™	Stamped & Formed	12	10-12	25	Pin	Gold
AT62-12-0144	ATP, AHD-6, DuraMate™	Stamped & Formed	12	12-14	13	Socket	Gold
AT62-12-0166	ATP, AHD-6,DuraMate™	Stamped & Formed	12	12-14	13	Socket	Nickel
AT62-12-0222	ATP/ DuraMate™	Stamped & Formed	12	10-12	25	Socket	Nickel
AT62-12-0244	AT, DuraMate™	Stamped & Formed	12	10-12	25	Socket	Gold
AT60-14-0122	AT/AHD-9/DuraMate™	Stamped & Formed	16	14-16	13	Pin	Nickel
AT60-14-0144	AT/AHD-9/DuraMate™	Stamped & Formed	16	14-16	13	Pin	Gold
AT60-16-0122	AT/AHD-9/DuraMate™	Stamped & Formed	16	16-18	13	Pin	Nickel
AT60-16-0144	AT/AHD-9/DuraMate™	Stamped & Formed	16	16-18	13	Pin	Gold
AT60-16-0622	AT/AHD-9/DuraMate™	Stamped & Formed	16	18-20	13	Pin	Nickel
AT60-16-0644	AT/AHD-9/DuraMate™	Stamped & Formed	16	18-20	13	Pin	Gold
AT60-16-0822	AT/AHD-9, DuraMate™	Stamped & Formed	16	20-22	13	Pin	Nickel
AT60-16-0844	AT/AHD-9, DuraMate™	Stamped & Formed	16	20-22	13	Pin	Gold
AT62-14-0122	AT/AHD-9/DuraMate™	Stamped & Formed	16	14-16	13	Socket	Nickel
AT62-14-0144	AT/AHD-9/DuraMate™	Stamped & Formed	16	14-16	13	Socket	Gold
AT62-16-0122	AT/AHD-9/DuraMate™	Stamped & Formed	16	16-18	13	Socket	Nickel
AT62-16-0144	AT/AHD-9/DuraMate™	Stamped & Formed	16	16-18	13	Socket	Gold
AT62-16-0622	AT, AHD-9, DuraMate™	Stamped & Formed	16	18-20	13	Socket	Nickel
AT62-16-0644	AT, AHD-9, DuraMate™	Stamped & Formed	16	18-20	13	Socket	Gold
AT62-16-0822	AT, AHD-9	Stamped & Formed	16	20-22	13	Socket	Nickel
AT62-16-0844	AT, AHD-9	Stamped & Formed	16	20-22	13	Socket	Gold
AT60-20-0122	ATM/ DuraMate™	Stamped & Formed	20	16-22	7.5	Pin	Nickel
AT60-20-0144	ATM/ DuraMate™	Stamped & Formed	20	16-22	7.5	Pin	Gold
AT60-20-0222	ATM/DuraMate™	Stamped & Formed	20	16-22	7.5	Pin	Nickel
AT60-20-0244	ATM/ DuraMate™	Stamped & Formed	20	16-22	7.5	Pin	Gold
AT60-20-0277	ATM/DuraMate™	Stamped & Formed	20	16-22	7.5	Pin	Tin
AT62-20-0122	ATM/ DuraMate™	Stamped & Formed	20	16-22	7.5	Socket	Nickel
AT62-20-0144	ATM/ DuraMate™	Stamped & Formed	20	16-22	7.5	Socket	Gold
AT62-20-0222	ATM/ DuraMate™	Stamped & Formed	20	16-22	7.5	Socket	Nickel
AT62-20-0244	ATM/ DuraMate™	Stamped & Formed	20	16-22	7.5	Socket	Gold
AT62-20-0277	ATM/ DuraMate™	Stamped & Formed	20	16-22	7.5	Socket	Tin

For more information, contact: Customer Service, +1 800 394 7732, csr@amphenol-sine.com