

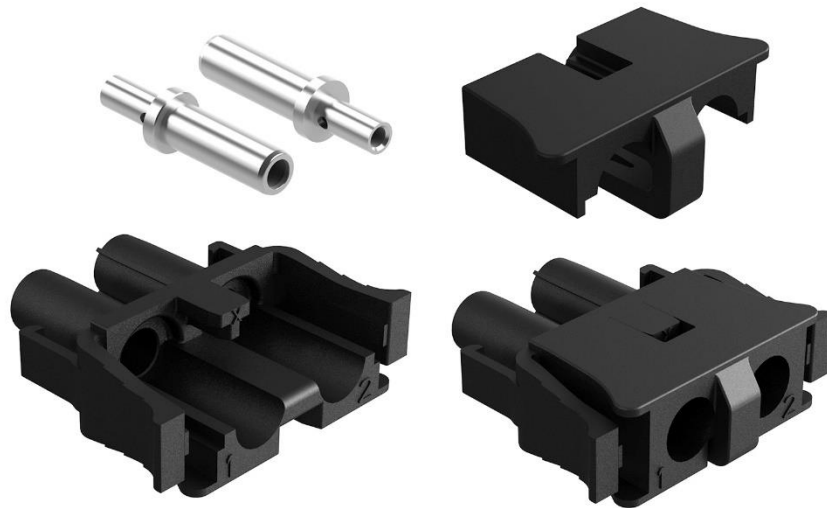
Your Interconnect Solutions Expert



The following Work Instructions pertain to the preparation and insertion of wire and contacts into the Amphenol PRM™ Series 2400-PLG connector body.

Required tooling:

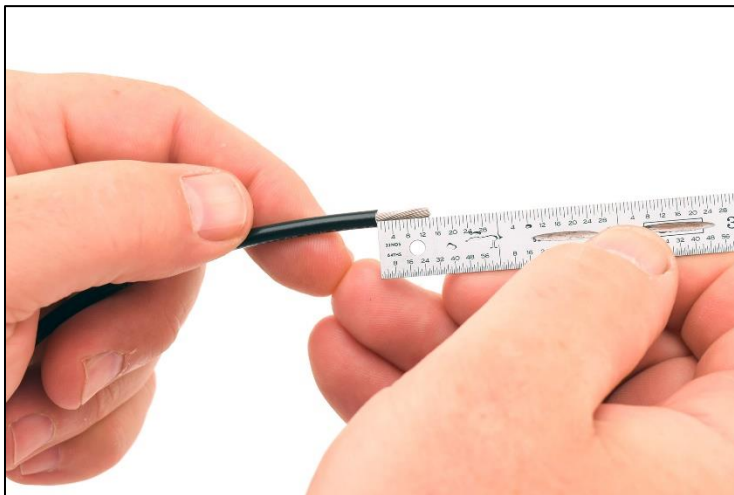
- Generic wire strippers
- Crimp Tool - Burndy Y8MRB-1 or Daniels M300BT
- Generic needle nose pliers



Your Interconnect Solutions Expert



Step 1: Strip wire back approx. 1/4"



Step 1: Detail

Your Interconnect Solutions Expert

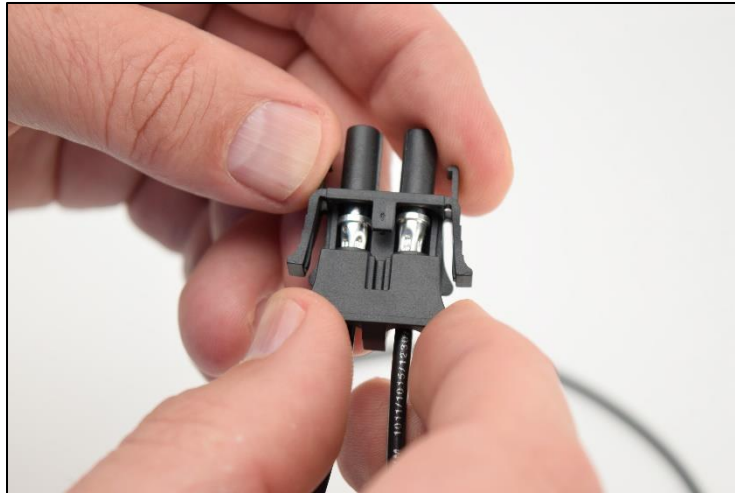


Step 2: Crimp terminal

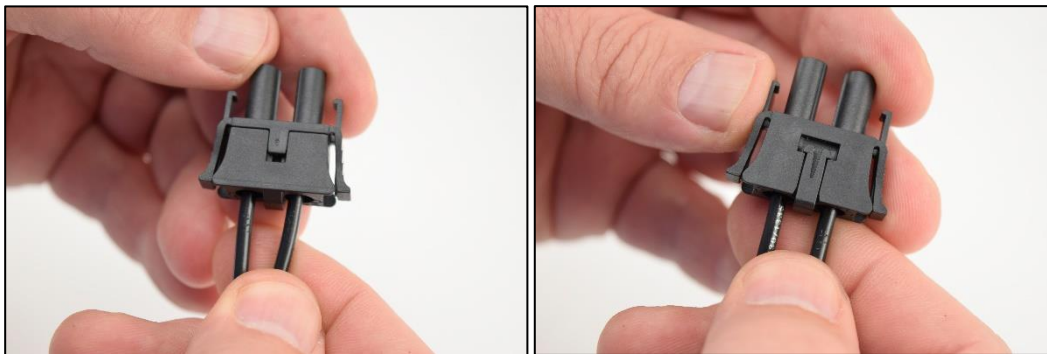


Step 3: Insert crimped contacts into body

Your Interconnect Solutions Expert

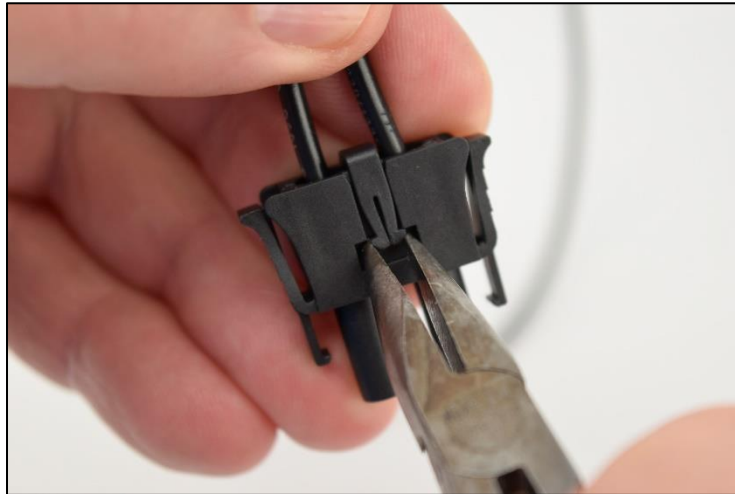


Step 4: Slide up/insert retainer until audible and tactile "click"



Step 4: Detail  
Front and Back View of inserted retainer clip

Your Interconnect Solutions Expert



Optional Step 5:  
Use needle nose pliers to squeeze tension tabs to remove retainer clip.