

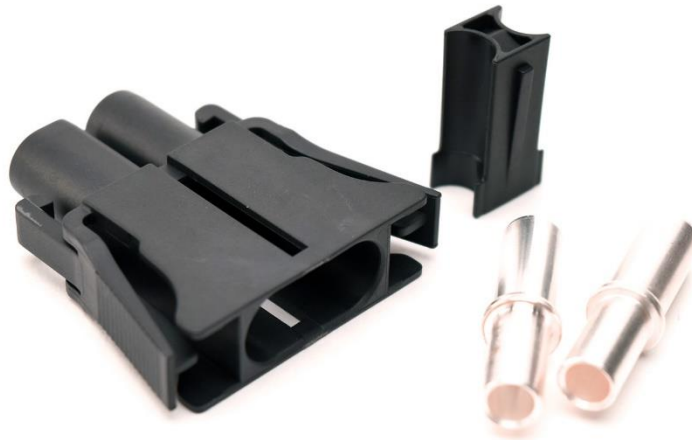
Your Interconnect Solutions Expert



The following Assembly Instructions refer to the preparation and insertion of wire and contacts into the Amphenol PRM™ Series connector body.

Required tooling:

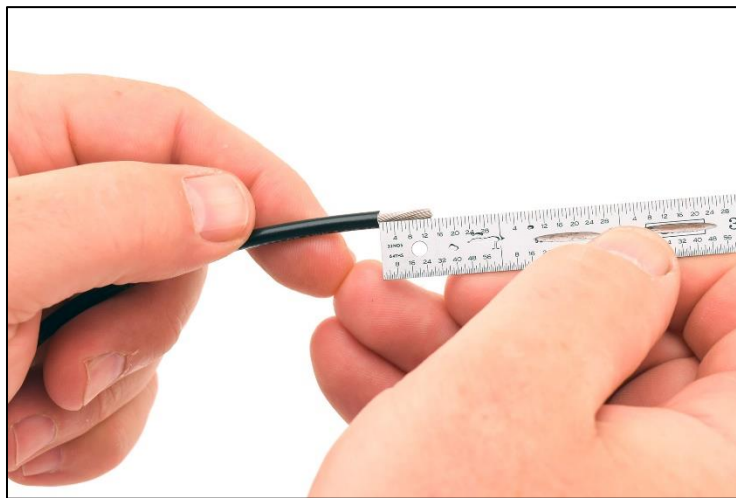
- Generic wire strippers
- Crimp Tool - Burndy Y8MRB-1 or Daniels M300BT



Your Interconnect Solutions Expert

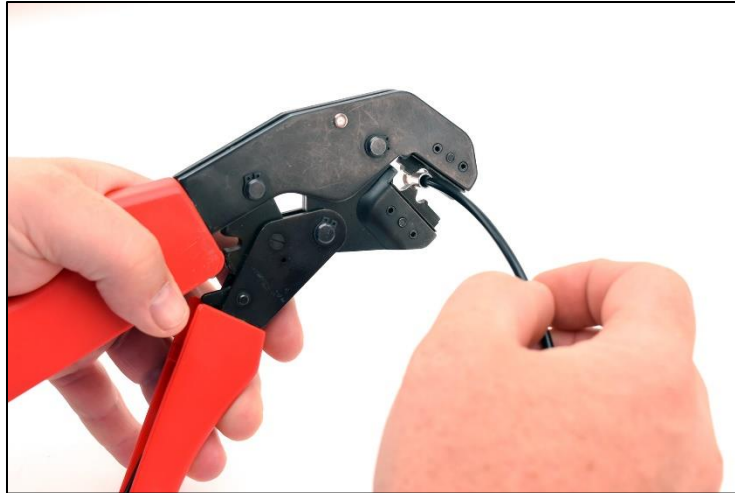


Step 1A: Strip wire back approx. 7/16"

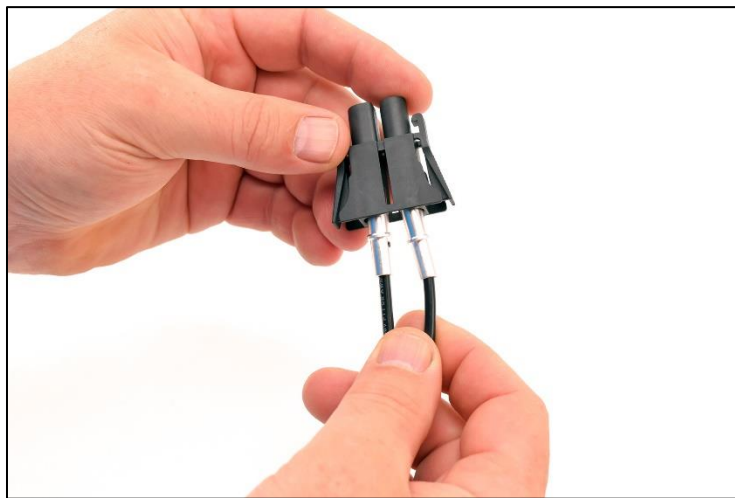


Step 1B: Detail

Your Interconnect Solutions Expert



Step 2: Crimp terminal

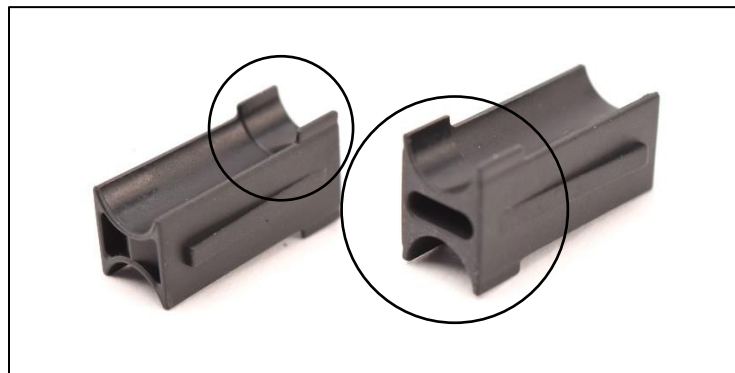


Step 3A: Insert contacts into body

Your Interconnect Solutions Expert



Step 3B: Insert until audible and tactile "click"



Step 4A: Retaining Clip.
Insert large end with tabs into connector body

Your Interconnect Solutions Expert

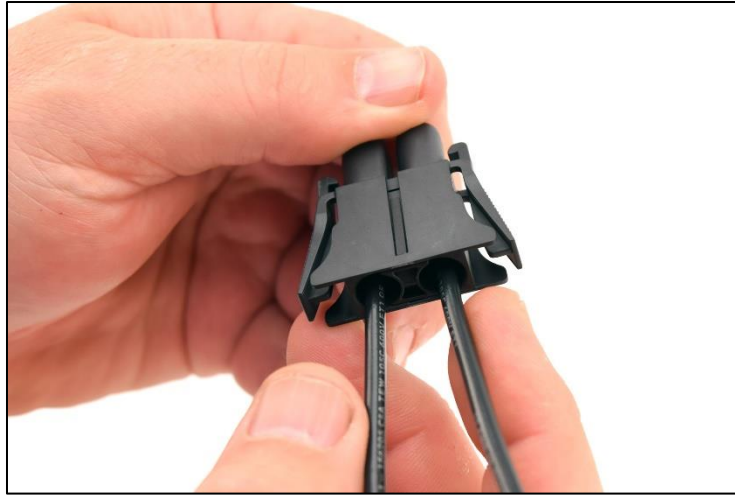


Step 4B: Fit between wires



Step 4C: Push retainer clip until hooks snap into place.

Your Interconnect Solutions Expert



Step 4D: An audible snap should be heard