



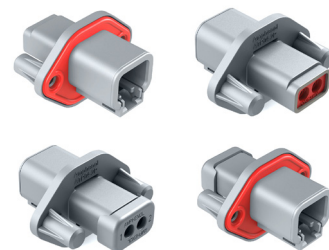
PM Panel|Mate™ AT

2, 3, 4, 6, 8 and 12 Position / Size 16, 13A
13 Position / Size 12, 25A; Size 16, 13A



PM Panel|Mate™ ATP

2 and 4 Position / Size 12, 25A



The Amphenol PanelMate™ series combines flange mounting options with the proven reliability of the AT/ATP Series™ environmentally-sealed thermoplastic connection system. Engineered with a one-piece sealed flange design for rapid and secure mounting, its durable high temperature silicone facial seal provides a barrier of protection from lubricating oils, hydraulic fluids and fossil fuels to withstand the challenges and complexities of harsh environment applications.

Wire Range	Size 12 contacts will accept wire ranges of 12-14AWG; Size 16 contacts will accept 14-20AWG.
Operating Temperature	-55°C to +125°C at rated current
Housing/Latch	Thermoplastic/Integrated latch for mating
Dielectric Value	Meets or exceeds 1500 volts minimum
Drop Test	Shall not become detached or loosened when placed at 750mm and dropped to concrete eight times
Shock	No latch disengagement or discontinuity shall be the result when subjected to 50 g's in each of three axis (X, Y & Z)
Vibration	Continued continuity without degradation to mechanical or physical attributes following vibration. (max acceleration 20 g's at Sine sweep of 10-2000Hz)
Connector Terminal Retention	When subjected to a direct pull, contacts achieve a minimum pull-out force of 25 lbs.
Connector Retention	A mated connector subjected to a pulling force by the exiting wire bundle at 25 lbs. times the number of contacts to a maximum of 100 lbs. applying load for 30 seconds
Thermal Shock	Subjected to 10 cycles at -55°C to +125°C with no cracking, chipping or other damage detrimental to the normal operation of the connector
Insulation Resistance	1000 megohms minimum at 25°C
Mating Cycle Durability	Following 100 cycles of connection engagement and disengagement, degradation either mechanical or electrical is not evident
Contact Millivolt Drop	Size 16 contacts with 16AWG conductor - 100 mV drop max at 13A test current
Water Immersion	A mated connection, properly wired, placed in an oven at +125°C for 1 hour, then placed immediately in a depth of water of 1 meter without loss of electronic performance

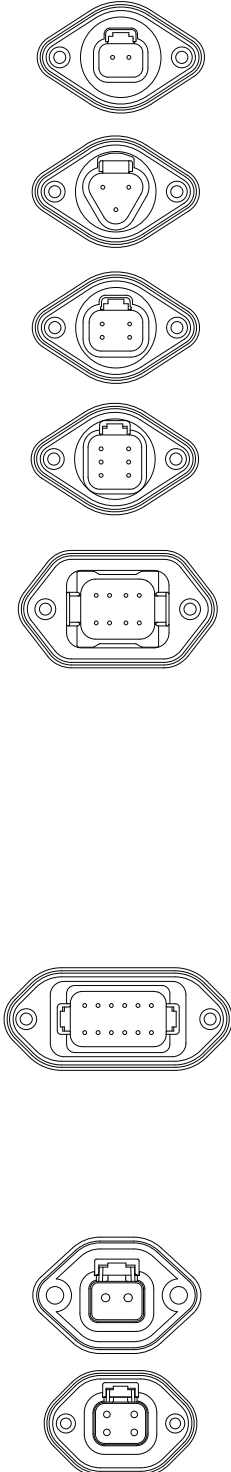
PanelMate™ AT/ATP Series meets all the performance criteria and specifications of the AT Series™, and is also available in a wide variety of custom colors. Consult factory for complete specifications.



A ASeries™ Family



Standard products. Custom solutions
Customer Service +1 800 394 7732



Part Number	Series	Description	Contact Size	Amperage	
AT04-2P-PM11	AT	2 Pos. Recep., Pin, Panel Mount, Self-Threading	16	13	
AT04-2P-PM12		2 Pos. Recep., Pin, Panel Mount, Self-Threading, RD01 Seal	16	13	
AT04-2P-PM13		2 Pos. Recep., Pin, Panel Mount, Self-Threading, Cap	16	13	
AT04-2P-PM14		2 Pos. Recep., Pin, Panel Mount, Self-Threading, RD01 Seal, Cap	16	13	
AT04-3P-PM11	AT	3 Pos. Recep., Pin, Panel Mount, Self-Threading	16	13	
AT04-3P-PM12		3 Pos. Recep., Pin, Panel Mount, Self-Threading, RD01 Seal	16	13	
AT04-3P-PM13		3 Pos. Recep., Pin, Panel Mount, Self-Threading, Cap	16	13	
AT04-3P-PM14		3 Pos. Recep., Pin, Panel Mount, Self-Threading, RD01 Seal, Cap	16	13	
AT04-4P-PM11	AT	4 Pos. Recep., Pin, Panel Mount, Self-Threading	16	13	
AT04-4P-PM12		4 Pos. Recep., Pin, Panel Mount, Self-Threading, RD01 Seal	16	13	
AT04-4P-PM13		4 Pos. Recep., Pin, Panel Mount, Self-Threading, Self-Threading, Cap	16	13	
AT04-4P-PM14		4 Pos. Recep., Pin, Panel Mount, Self-Threading, RD01 Seal, Cap	16	13	
AT04-6P-PM11	AT	6 Pos. Recep., Pin, Panel Mount, Self-Threading	16	13	
AT04-6P-PM12		6 Pos. Recep., Pin, Panel Mount, Self-Threading, RD01 Seal	16	13	
AT04-6P-PM13		6 Pos. Recep., Pin, Panel Mount, Self-Threading, Cap	16	13	
AT04-6P-PM14		6 Pos. Recep., Pin, Panel Mount, Self-Threading, RD01 Seal, Cap	16	13	
AT04-08PA-PM11	AT	8 Pos. Recep., Pin, Panel Mount, Self-Threading, Keyed A	16	13	
AT04-08PA-PM12		8 Pos. Recep., Pin, Panel Mount, Self-Threading, RD01 Seal, Keyed A	16	13	
AT04-08PA-PM13		8 Pos. Recep., Pin, Panel Mount, Self-Threading, Cap, Keyed A	16	13	
AT04-08PA-PM14		8 Pos. Recep., Pin, Panel Mount, Self-Threading, RD01 Seal, Cap, Keyed A	16	13	
AT04-08PB-PM11		8 Pos. Recep., Pin, Panel Mount, Self-Threading, Keyed B	16	13	
AT04-08PB-PM12		8 Pos. Recep., Pin, Panel Mount, Self-Threading, RD01 Seal, Keyed B	16	13	
AT04-08PB-PM13		8 Pos. Recep., Pin, Panel Mount, Self-Threading, Cap, Keyed B	16	13	
AT04-08PB-PM14		8 Pos. Recep., Pin, Panel Mount, Self-Threading, RD01 Seal, Cap, Keyed B	16	13	
AT04-08PC-PM11		8 Pos. Recep., Pin, Panel Mount, Self-Threading, Keyed C	16	13	
AT04-08PC-PM12		8 Pos. Recep., Pin, Panel Mount, Self-Threading, RD01 Seal, Keyed C	16	13	
AT04-08PC-PM13		8 Pos. Recep., Pin, Panel Mount, Self-Threading, Cap, Keyed C	16	13	
AT04-08PC-PM14		8 Pos. Recep., Pin, Panel Mount, Self-Threading, RD01 Seal, Cap, Keyed C	16	13	
AT04-08PD-PM11		8 Pos. Recep., Pin, Panel Mount, Self-Threading, Keyed D	16	13	
AT04-08PD-PM12		8 Pos. Recep., Pin, Panel Mount, Self-Threading, RD01 Seal, Keyed D	16	13	
AT04-08PD-PM13		8 Pos. Recep., Pin, Panel Mount, Self-Threading, Cap, Keyed D	16	13	
AT04-08PD-PM14		8 Pos. Recep., Pin, Panel Mount, Self-Threading, RD01 Seal, Cap, Keyed D	16	13	
AT04-12PA-PM11		AT	12 Pos. Recep., Pin, Panel Mount, Self-Threading, Keyed A	16	13
AT04-12PA-PM12			12 Pos. Recep., Pin, Panel Mount, Self-Threading, RD01 Seal, Keyed A	16	13
AT04-12PA-PM13			12 Pos. Recep., Pin, Panel Mount, Self-Threading, Cap, Keyed A	16	13
AT04-12PA-PM14			12 Pos. Recep., Pin, Panel Mount, Self-Threading, RD01 Seal, Cap, Keyed A	16	13
AT04-12PB-PM11	12 Pos. Recep., Pin, Panel Mount, Self-Threading, Keyed B		16	13	
AT04-12PB-PM12	12 Pos. Recep., Pin, Panel Mount, Self-Threading, RD01 Seal, Keyed B		16	13	
AT04-12PB-PM13	12 Pos. Recep., Pin, Panel Mount, Self-Threading, Cap, Keyed B		16	13	
AT04-12PB-PM14	12 Pos. Recep., Pin, Panel Mount, Self-Threading, RD01 Seal, Cap, Keyed B		16	13	
AT04-12PC-PM11	12 Pos. Recep., Pin, Panel Mount, Self-Threading, Keyed C		16	13	
AT04-12PC-PM12	12 Pos. Recep., Pin, Panel Mount, Self-Threading, RD01 Seal, Keyed C		16	13	
AT04-12PC-PM13	12 Pos. Recep., Pin, Panel Mount, Self-Threading, Cap, Keyed C		16	13	
AT04-12PC-PM14	12 Pos. Recep., Pin, Panel Mount, Self-Threading, RD01 Seal, Cap, Keyed C		16	13	
AT04-12PD-PM11	12 Pos. Recep., Pin, Panel Mount, Self-Threading, Keyed D		16	13	
AT04-12PD-PM12	12 Pos. Recep., Pin, Panel Mount, Self-Threading, RD01 Seal, Keyed D		16	13	
AT04-12PD-PM13	12 Pos. Recep., Pin, Panel Mount, Self-Threading, Cap, Keyed D		16	13	
AT04-12PD-PM14	12 Pos. Recep., Pin, Panel Mount, Self-Threading, RD01 Seal, Cap, Keyed D		16	13	
AT1612-13PB-RDG	AT/ATP		13 Pos., Recep., Pin, Panel Mount, Self Threading, RD01 Seal, Cap, Keyed B	16-12	13-25
AT1612-13PB-G			13 Pos., Recep., Pin, Panel Mount, Self Threading, Standard Seal, Cap, Keyed B	16-12	13-25
ATP04-2P-PM07G	ATP		2 Pos. Recep., Pin, Panel Mount, w Gasket, Black	12	25
ATP04-2P-PM07GEC			2 Pos. Recep., Pin, Panel Mount, w Gasket, End Cap, Black	12	25
ATP04-2P-PM08G		2 Pos. Recep., Pin, Panel Mount, w Gasket, Grey	12	25	
ATP04-2P-PM08GEC		2 Pos. Recep., Pin, Panel Mount, w Gasket, End Cap, Grey	12	25	
ATP04-4P-PM07G	ATP	4 Pos. Recep., Pin, Panel Mount, w Gasket, Black	12	25	
ATP04-4P-PM07GEC		4 Pos. Recep., Pin, Panel Mount, w Gasket, End Cap, Black	12	25	
ATP04-4P-PM08G		4 Pos. Recep., Pin, Panel Mount, w Gasket, Grey	12	25	
ATP04-4P-PM08GEC		4 Pos. Recep., Pin, Panel Mount, w Gasket, End Cap, Grey	12	25	
AT04-XP-PM1X-G7	AT	Gasket for 2, 3, 4, 6 Position Receptacles (AT Size 16 receptacles only)	-	-	
AT04-08PB-G7		Gasket for 8 Position Receptacle	-	-	
AT1612-PB-G7		Gasket for 12, 13 Position Receptacle	-	-	

For more information, contact: Customer Service, +1 800 394 7732, csr@amphenol-sine.com