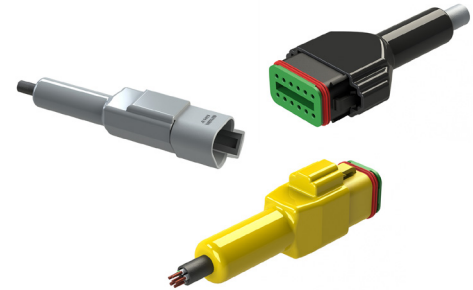




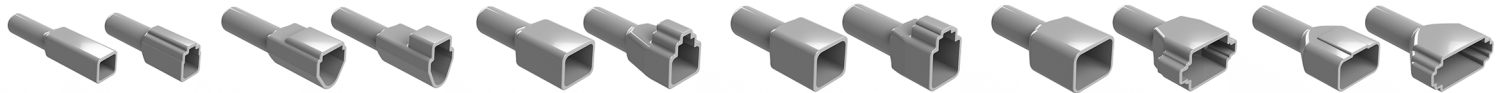
# AT ATSeries™ Boots



## Protective Backshell Boots

Amphenol Sine Systems' **AT Series™ Boots** provide an optional protective backshell covering for harsh environmental and industrial applications in -29°C to +100°C conditions. For use with any AT Series™ modification that does not include an endcap. Available in 2-12 position, the boots come in 3 different colors, are made of high-quality Platisol and are compatible with existing industry-standard rectangular connectors.

**Applications:** Heavy Equipment, Agriculture, Construction, Transportation, Off-Road, Mining, Industrial, Railway, Automotive, Diagnostics, Marine, Water Resistance, Harsh Environments



Part Number	Description	Color
AT2P-BT	AT, Boot (Backshell) for 2 Pos Receptacle	Gray
AT2P-BT-BK	AT, Boot (Backshell) for 2 Pos Receptacle	Black
AT2P-BT-YW	AT, Boot (Backshell) for 2 Pos Receptacle	Yellow
AT3P-BT	AT, Boot (Backshell) for 3 Pos Receptacle	Gray
AT3P-BT-BK	AT, Boot (Backshell) for 3 Pos Receptacle	Black
AT3P-BT-YW	AT, Boot (Backshell) for 3 Pos Receptacle	Yellow
AT4P-BT	AT, Boot (Backshell) for 4 Pos Receptacle	Gray
AT4P-BT-BK	AT, Boot (Backshell) for 4 Pos Receptacle	Black
AT4P-BT-YW	AT, Boot (Backshell) for 4 Pos Receptacle	Yellow
AT6P-BT	AT, Boot (Backshell) for 6 Pos Receptacle	Gray
AT6P-BT-BK	AT, Boot (Backshell) for 6 Pos Receptacle	Black
AT6P-BT-YW	AT, Boot (Backshell) for 6 Pos Receptacle	Yellow
AT8P-BT	AT, Boot (Backshell) for 8 Pos Receptacle	Gray
AT8P-BT-BK	AT, Boot (Backshell) for 8 Pos Receptacle	Black
AT8P-BT-YW	AT, Boot (Backshell) for 8 Pos Receptacle	Yellow
AT12P-BT	AT, Boot (Backshell) for 12 Pos Receptacle	Gray
AT12P-BT-BK	AT, Boot (Backshell) for 12 Pos Receptacle	Black
AT12P-BT-YW	AT, Boot (Backshell) for 12 Pos Receptacle	Yellow

Part Number	Description	Color
AT2S-BT	AT, Boot (Backshell) for 2 Pos Plug	Gray
AT2S-BT-BK	AT, Boot (Backshell) for 2 Pos Plug	Black
AT2S-BT-YW	AT, Boot (Backshell) for 2 Pos Plug	Yellow
AT3S-BT	AT, Boot (Backshell) for 3 Pos Plug	Gray
AT3S-BT-BK	AT, Boot (Backshell) for 3 Pos Plug	Black
AT3S-BT-YW	AT, Boot (Backshell) for 3 Pos Plug	Yellow
AT4S-BT	AT, Boot (Backshell) for 4 Pos Plug	Gray
AT4S-BT-BK	AT, Boot (Backshell) for 4 Pos Plug	Black
AT4S-BT-YW	AT, Boot (Backshell) for 4 Pos Plug	Yellow
AT6S-BT	AT, Boot (Backshell) for 6 Pos Plug	Gray
AT6S-BT-BK	AT, Boot (Backshell) for 6 Pos Plug	Black
AT6S-BT-YW	AT, Boot (Backshell) for 6 Pos Plug	Yellow
AT8S-BT	AT, Boot (Backshell) for 8 Pos Plug	Gray
AT8S-BT-BK	AT, Boot (Backshell) for 8 Pos Plug	Black
AT8S-BT-YW	AT, Boot (Backshell) for 8 Pos Plug	Yellow
AT12S-BT	AT, Boot (Backshell) for 12 Pos Plug	Gray
AT12S-BT-BK	AT, Boot (Backshell) for 12 Pos Plug	Black
AT12S-BT-YW	AT, Boot (Backshell) for 12 Pos Plug	Yellow



Standard products. Custom solutions  
Customer Service +1 800 394 7732

**For more information, contact:** Customer Service, +1 800 394 7732, [csr@amphenol-sine.com](mailto:csr@amphenol-sine.com)